

ALKBH2 Rabbit mAb (AR1800)

Key Features

Host Species:	Rabbit
Reactivity:	Human,Mouse,Rat
Applications:	WB,FC
Isotype:	IgG,Kappa
MW:	29kDa (Calculated) 29kDa (Observed)

Recommended Dilution Ratios

WB:	1:1000-5000
FC:	1:100-500

Storage

-15°C to -25°C/1 year (Do not lower than -25°C)

Basic Information

Clonality	Monoclonal
-----------	------------

Immunogen Information

Specificity	Endogenous
-------------	------------

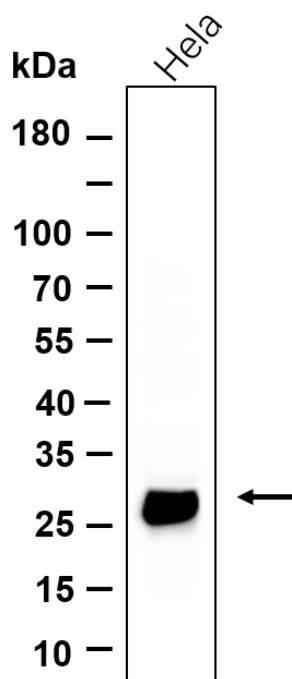
Target Information

Gene name	ALKBH2 ABH2
Protein Name	Alpha-ketoglutarate-dependent dioxygenase alkB homolog 2 (Alkylated DNA repair protein alkB homolog 2) (DNA oxidative demethylase ALKBH2) (Oxy DC1)

Organism	Gene ID	UniProt ID
Human	121642	Q6NS38
Mouse		Q6P6J4

Cellular Localization	Nucleus. Nucleus, nucleolus. Nucleus, nucleoplasm. Relocates to the replication foci during S-phase.
Tissue specificity	Detected in colon, small intestine, ovary, testis, prostate, skeletal muscle, heart, liver and urinary bladder.

Validation Data



Western blot analysis of lysates from HeLa cell, primary antibody was diluted at 1:1000, 4°C overnight. Dylight 800 secondary Antibody was diluted at 1:10000, 37°C 1 hour.

For Research Use Only