

## TIAM2 Rabbit mAb (AR1795)

### Key Features

Host Species:	Rabbit
Reactivity:	Human,Mouse,Rat
Applications:	WB,IHC,IF,ELISA
Isotype:	IgG,Kappa
MW:	190kDa (Calculated) 190kDa (Observed)

### Recommended Dilution Ratios

IHC:	1:200-1000
WB:	1:2000-10000
IF:	1:200-1000
ELISA:	1:5000-20000

### Storage

-15°C to -25°C/1 year (Do not lower than -25°C)

### Basic Information

Clonality	Monoclonal
-----------	------------

### Immunogen Information

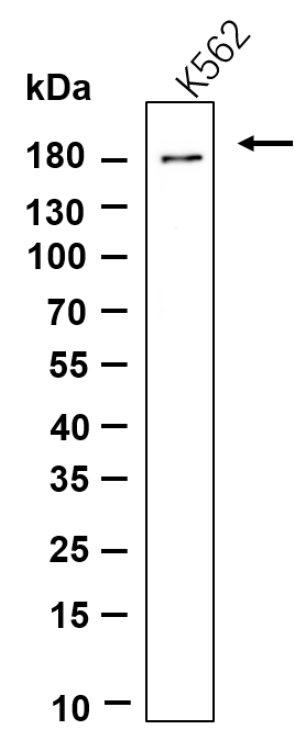
Specificity	Endogenous
-------------	------------

### Target Information

Gene name	TIAM2, KIAA2016, STEF
Protein Name	Rho guanine nucleotide exchange factor TIAM2 (SIF and TIAM1-like exchange factor) (Tlymphoma invasion and metastasis-inducing protein 2) (TIAM-2)

	Organism	Gene ID	UniProt ID
	Human	26230	Q8IVF5
	Mouse	24001	Q6ZPF3
Cellular Localization	Cytoplasm. Cell projection, lamellipodium. Cell projection, filopodium. Cell projection, growth cone. Cell projection, neuron projection. Perikaryon.		
Tissue specificity	Expressed in the occipital, frontal and temporal lobes, cerebellum, putamen and testis.		

Validation Data



Western blot analysis of lysates from K562 cell, primary antibody was diluted at 1:1000, 4°C overnight. Dylight 800 secondary antibody was diluted at 1:10000, 37°C 1 hour.

For Research Use Only