

KLLN Rabbit mAb (AR1796)

Key Features

Host Species:	Rabbit
Reactivity:	Human,Mouse,Rat
Applications:	WB
Isotype:	IgG,Kappa
MW:	20kDa (Calculated) 20kDa (Observed)

Recommended Dilution Ratios

WB:	1:1000-5000
-----	-------------

Storage

-15°C to -25°C/1 year (Do not lower than -25°C)

Basic Information

Clonality	Monoclonal
-----------	------------

Immunogen Information

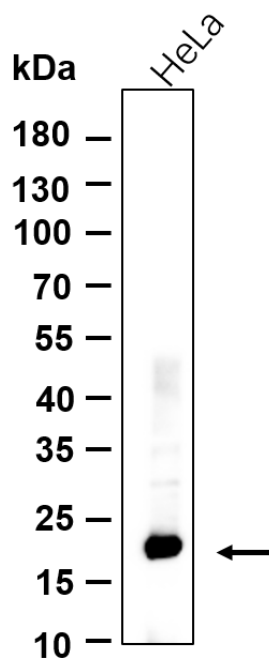
Specificity	Endogenous
-------------	------------

Target Information

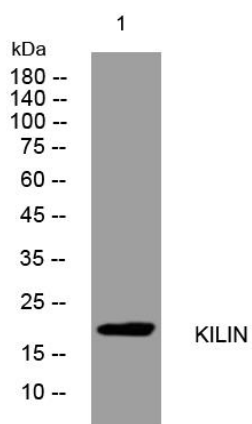
Gene name	KLLN
Protein Name	KILIN

	Organism	Gene ID	UniProt ID
	Human	100144748	B2CW77
Cellular Localization	Nucleus.		

Validation Data



Western blot analysis of lysates from HeLa cell, primary antibody was diluted at 1:1000, 4°C overnight. Dylight 800 secondary Antibody was diluted at 1:10000, 37°C 1 hour.



Western blot analysis of lysates from Jurkat cells, primary antibody was diluted at 1:1000, 4°C overnight.

For Research Use Only