

DPS1 Rabbit mAb (AR1793)

Key Features

Host Species:	Rabbit
Reactivity:	Human,Mouse,Rat
Applications:	WB
Isotype:	IgG,Kappa
MW:	46kDa (Calculated) 46kDa (Observed)

Recommended Dilution Ratios

WB:	1:1000-5000
-----	-------------

Storage

-15°C to -25°C/1 year (Do not lower than -25°C)

Basic Information

Clonality	Monoclonal
-----------	------------

Immunogen Information

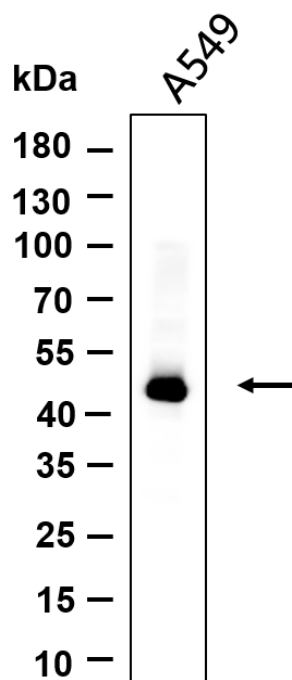
Specificity	Endogenous
-------------	------------

Target Information

Gene name	PDSS1, DPS1, TPRT
Protein Name	All trans-polyprenyl-diphosphate synthase PDSS1 (All-trans-decaprenyl-diphosphate synthase subunit 1) (EC 2.5.1.91) (Decaprenyl pyrophosphate synthase subunit 1) (Decaprenyl-diphosphate synthase subunit 1) (Solanesyl-diphosphate synthase subunit 1) (Trans-prenyltransferase 1) (TPT 1)

	Organism	Gene ID	UniProt ID
	Human	23590	Q5T2R2
	Mouse	56075	Q33DR2
Cellular Localization	Mitochondrion.		

Validation Data



Western blot analysis of lysates from A549 cell, primary antibody was diluted at 1:1000, 4°C overnight. Dylight 800 secondary antibody was diluted at 1:10000, 37°C 1 hour.

For Research Use Only