

HSPA12A Rabbit mAb (AR1792)

Key Features

Host Species:	Rabbit
Reactivity:	Human,Mouse,Rat
Applications:	WB,IHC,IF,ELISA
Isotype:	IgG,Kappa
MW:	75kDa (Calculated) 75kDa (Observed)

Recommended Dilution Ratios

WB:	1:2000-10000
IHC:	1:200-1000
IF:	1:200-1000
ELISA:	1:5000-20000

Storage

-15°C to -25°C/1 year (Do not lower than -25°C)

Basic Information

Clonality	Monoclonal
-----------	------------

Immunogen Information

Specificity	Endogenous
-------------	------------

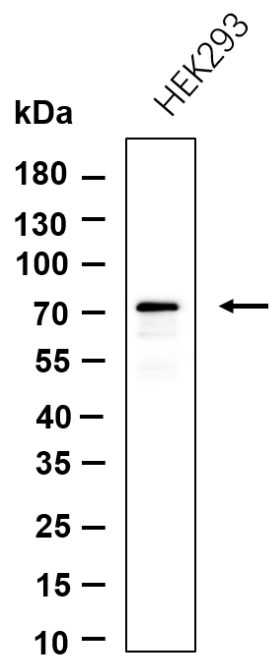
Target Information

Gene name	HSPA12A KIAA0417
Protein Name	Heat shock 70 kDa protein 12A

Organism	Gene ID	UniProt ID
Human	259217	O43301
Mouse		Q8K0U4

Cellular Localization	Cytoplasm. Nucleus.
Tissue specificity	Widely expressed with highest levels in brain, kidney and muscle.

Validation Data



Western blot analysis of lysates from HEK293 cell, primary antibody was diluted at 1:1000, 4°C overnight. Dylight 800 secondary antibody was diluted at 1:10000, 37°C 1 hour.

For Research Use Only