

## RAB7B Rabbit mAb (AR1790)

### Key Features

Host Species:	Rabbit
Reactivity:	Human, Mouse
Applications:	WB, IHC, FC
Isotype:	IgG, Kappa
MW:	23kDa (Calculated) 23kDa (Observed)

### Recommended Dilution Ratios

WB:	1:1000-5000
IHC:	1:200-1000
FC:	1:100-500

### Storage

-15°C to -25°C/1 year (Do not lower than -25°C)

### Basic Information

Clonality	Monoclonal
-----------	------------

### Immunogen Information

Specificity	Endogenous
-------------	------------

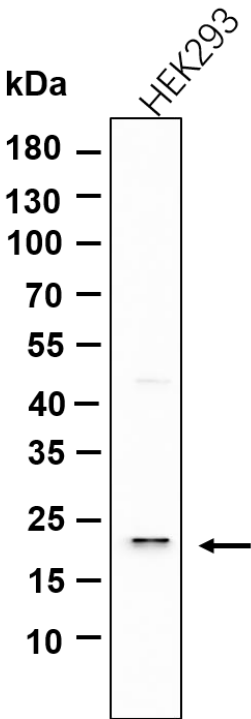
### Target Information

Gene name	RAB7B
Protein Name	Ras-related protein Rab-7b

Organism	Gene ID	UniProt ID
Human	338382	Q96AH8
Mouse	226421	Q8VEA8

Cellular Localization	Late endosome. Lysosome. Golgi apparatus. Golgi apparatus, trans-Golgi network. Cytoplasmic vesicle, phagosome. Cytoplasmic vesicle, phagosome membrane; Lipid-anchor; Cytoplasmic side. Note: Recruited to phagosomes containing S.aureus or M.tuberculosis.
Tissue specificity	Expressed in heart, placenta, lung, skeletal muscle and peripheral blood leukocyte.

Validation Data



Western blot analysis of lysates from HEK293 cell, primary antibody was diluted at 1:1000, 4°C overnight. Dylight 800 secondary antibody was diluted at 1:10000, 37°C 1 hour.

For Research Use Only