

OXGR1 Rabbit mAb (AR1789)

Key Features

Host Species:	Rabbit
Reactivity:	Human,Mouse,Rat
Applications:	WB,IF,ELISA
Isotype:	IgG,Kappa
MW:	38kDa (Calculated) 38kDa (Observed)

Recommended Dilution Ratios

WB:	1:1000-5000
IF:	1:200-1000
ELISA:	1:5000-20000

Storage

-15°C to -25°C/1 year (Do not lower than -25°C)

Basic Information

Clonality	Monoclonal
-----------	------------

Immunogen Information

Specificity	Endogenous
-------------	------------

Target Information

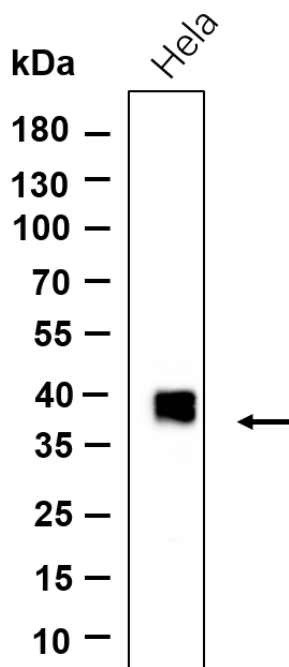
Gene name	OXGR1 GPR80 GPR99 P2RY15 P2Y15 2-oxoglutarate receptor 1 (Alpha-ketoglutarate receptor 1) (G-protein coupled receptor 80) (G-protein coupled receptor 99) (P2Y purinoceptor 15) (P2Y15) (P2Y-like GPCR) (P2Y-like nucleotide receptor)
Protein Name	

Organism	Gene ID	UniProt ID
Human	27199	Q96P68
Mouse		Q6IYF8
Rat		Q6Y1R5

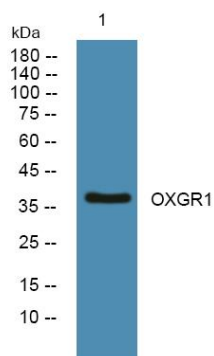
Cellular Localization	Cell membrane; Multi-pass membrane protein.
Tissue specificity	Detected in kidney and, to a lower extent, in placenta. Not detected in brain tissues including the frontal cortex, caudate putamen,

thalamus, hypothalamus, hippocampus or pons.

Validation Data



Western blot analysis of lysates from HeLa cell, primary antibody was diluted at 1:1000, 4°C overnight. Dylight 800 secondary antibody was diluted at 1:10000, 37°C 1 hour.



Western blot analysis of lysates from K562 cells, primary antibody was diluted at 1:1000, 4°C overnight.

For Research Use Only