

## GPR182 Rabbit mAb (AR1780)

### Key Features

Host Species:	Rabbit
Reactivity:	Human, Mouse
Applications:	WB
Isotype:	IgG, Kappa
MW:	45kDa (Calculated) 45kDa (Observed)

### Recommended Dilution Ratios

WB:	1:1000-5000
-----	-------------

### Storage

-15°C to -25°C/1 year (Do not lower than -25°C)

### Basic Information

Clonality	Monoclonal
-----------	------------

### Immunogen Information

Specificity	Endogenous
-------------	------------

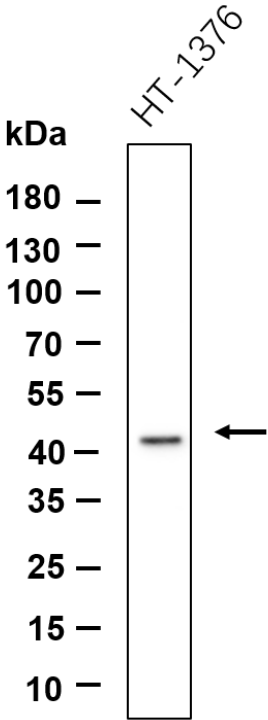
### Target Information

Gene name	GPR182 ADMR
Protein Name	G-protein coupled receptor 182

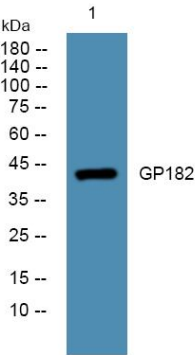
Organism	Gene ID	UniProt ID
Human	11318	O15218
Mouse		P43142
Rat		P31392

Cellular Localization	Cell membrane; Multi-pass membrane protein.
Tissue specificity	Highly expressed in heart, skeletal muscle, immune system, adrenal gland and liver.

Validation Data



Western blot analysis of lysates from HT-1376 cell, primary antibody was diluted at 1:1000, 4°C overnight. Dylight 800 secondary antibody was diluted at 1:10000, 37°C 1 hour.



Western blot analysis of lysates from SW480 cells, primary antibody was diluted at 1:1000, 4°C overnight.

For Research Use Only