

## KRTHB3 Rabbit mAb (AR1776)

### Key Features

Host Species:	Rabbit
Reactivity:	Human,Mouse,Rat
Applications:	WB
Isotype:	IgG,Kappa
MW:	54kDa (Calculated) 54kDa (Observed)

### Recommended Dilution Ratios

WB:	1:1000-5000
-----	-------------

### Storage

-15°C to -25°C/1 year (Do not lower than -25°C)

### Basic Information

Clonality	Monoclonal
-----------	------------

### Immunogen Information

Specificity	Endogenous
-------------	------------

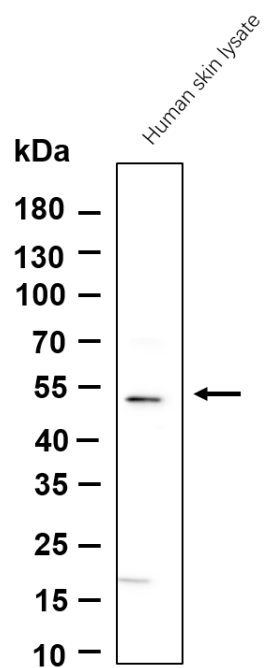
### Target Information

Gene name	KRT83 KRTHB3
Protein Name	Keratin, type II cuticular Hb3 (Hair keratin K2.10) (Keratin-83) (K83) (Type II hair keratin Hb3) (Type-II keratin Kb23)

Organism	Gene ID	UniProt ID
Human	3889	P78385
Mouse		Q6IMF0

Cellular Localization	extracellular space, keratin filament
Tissue specificity	Synthesis begins in the cortex 10-15 cell layers above the apex of the dermal papilla and ends abruptly in the middle of the cortex.

## Validation Data



Western blot analysis of lysates from Human skin lysate cell, primary antibody was diluted at 1:1000, 4°C overnight. Dylight 800 secondary antibody was diluted at 1:10000, 37°C 1 hour.

For Research Use Only