

LXR α Rabbit mAb (AR1775)

Key Features

Host Species:	Rabbit
Reactivity:	Human,Mouse,Rat
Applications:	WB,IF,ELISA
Isotype:	IgG,Kappa
MW:	50kDa (Calculated) 50kDa (Observed)

Recommended Dilution Ratios

WB:	1:2000-10000
IF:	1:200-1000
ELISA:	1:5000-20000

Storage

-15°C to -25°C/1 year (Do not lower than -25°C)

Basic Information

Clonality	Monoclonal
-----------	------------

Immunogen Information

Specificity	Endogenous
-------------	------------

Target Information

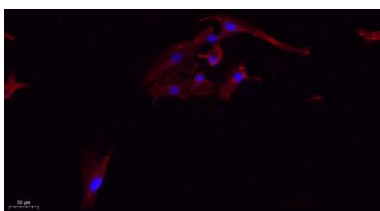
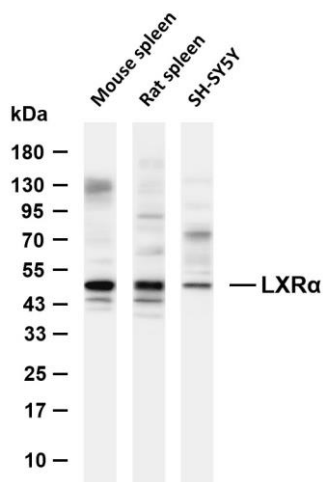
Gene name	NR1H3
Protein Name	Oxysterols receptor LXR-alpha

Organism	Gene ID	UniProt ID
Human	10062	Q13133
Mouse	22259	Q9Z0Y9
Rat		Q62685

Cellular Localization	Nucleus. Cytoplasm.
-----------------------	---------------------

Tissue specificity	Visceral organs specific expression. Strong expression was found in liver, kidney and intestine followed by spleen and to a lesser extent the adrenals.
--------------------	---

Validation Data



Various whole cell lysates were separated by 4-20% SDS-PAGE, and the membrane was blotted with anti-LXR α antibody. The HRP-conjugated Goat anti-Rabbit IgG (H + L) antibody was used to detect the antibody.

Lane 1: Mouse spleen

Lane 2: Rat spleen

Lane 2: SH-SY5Y

Predicted band size: 50kDa

Observed band size: 50kDa

Immunofluorescence analysis of A549.

1. primary Antibody(red) was diluted at 1:200(4°C overnight).
2. Goat Anti Rabbit IgG (H&L) - Alexa Fluor 594. Secondary antibody was diluted at 1:1000(room temperature, 50min).
3. DAPI (blue) 10min.

For Research Use Only