

## STOML2 Rabbit mAb (AR1774)

### Key Features

Host Species:	Rabbit
Reactivity:	Human,Mouse,Rat
Applications:	WB,IF,IP,ELISA
Isotype:	IgG,Kappa
MW:	39kDa (Calculated) 39kDa (Observed)

### Recommended Dilution Ratios

WB:	1:2000-10000
IF:	1:200-1000
ELISA:	1:5000-20000
IP:	1:50-200

### Storage

-15°C to -25°C/1 year (Do not lower than -25°C)

### Basic Information

Clonality	Monoclonal
-----------	------------

### Immunogen Information

Specificity	Endogenous
-------------	------------

### Target Information

Gene name	STOML2 SLP2 HSPC108
Protein Name	Stomatin-like protein 2 (SLP-2) (EPB72-like protein 2)

Organism	Gene ID	UniProt ID
Human	30968	Q9UJZ1
Mouse	66592	Q99JB2
Rat	298203	Q4FZT0

Cellular Localization

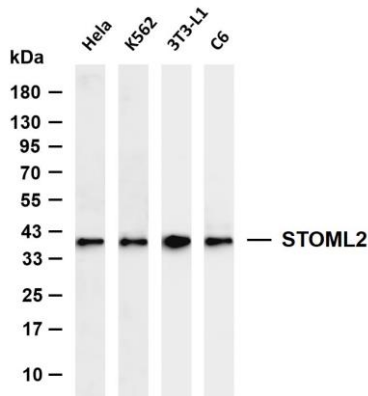
Cell membrane; Peripheral membrane protein. Mitochondrion. Mitochondrion inner membrane; Lipid-anchor. Mitochondrion intermembrane space. Membrane raft. Cytoplasm, cytoskeleton. Behaves as an integral membrane protein of the mitochondrion

despite the absence of a detectable transmembrane domain (PubMed:21746876). Also associates with the actin cytoskeleton and membrane rafts in activated T-cells (PubMed:18641330, PubMed:10713127). A minor pool is associated with the plasma membrane and is enriched at the immunological synapse in activated T-cells (PubMed:22623988). .

#### Tissue specificity

Ubiquitously expressed at low levels. Expressed in lymphoid tissues (at protein level).

### Validation Data



Various whole cell lysates were separated by 4-20% SDS-PAGE, and the membrane was blotted with anti-STOML2 antibody. The HRP-conjugated Goat anti-Rabbit IgG (H + L) antibody was used to detect the antibody.

Lane 1: HeLa

Lane 2: K562

Lane 3: 3T3-L1

Lane 4: C6

Predicted band size: 39kDa

Observed band size: 39kDa

For Research Use Only