

Drosha Rabbit mAb (AR1773)

Key Features

Host Species:	Rabbit
Reactivity:	Human,Mouse,Rat
Applications:	WB,IHC,IF,IP,ELISA
Isotype:	IgG,Kappa
MW:	159kDa (Calculated) 159kDa (Observed)

Recommended Dilution Ratios

IHC:	1:200-1000
WB:	1:2000-10000
IF:	1:200-1000
ELISA:	1:5000-20000
IP:	1:50-200

Storage

-15°C to -25°C/1 year (Do not lower than -25°C)

Basic Information

Clonality	Monoclonal
-----------	------------

Immunogen Information

Specificity	Endogenous
-------------	------------

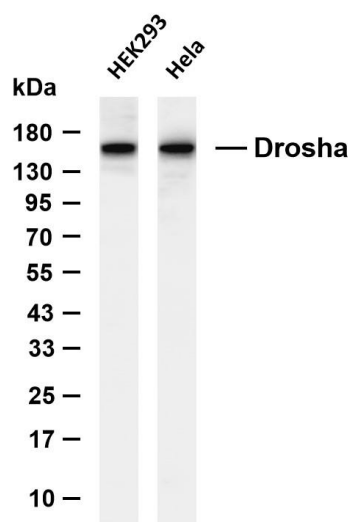
Target Information

Gene name	DROSHA
Protein Name	Ribonuclease 3

Organism	Gene ID	UniProt ID
Human	29102	Q9NRR4
Mouse	14000	Q5HZJ0

Cellular Localization	Nucleus. Nucleus, nucleolus. A fraction is translocated to the nucleolus during the S phase of the cell cycle. Localized in GW bodies (GWBs), also known as P-bodies.
Tissue specificity	Ubiquitous.

Validation Data



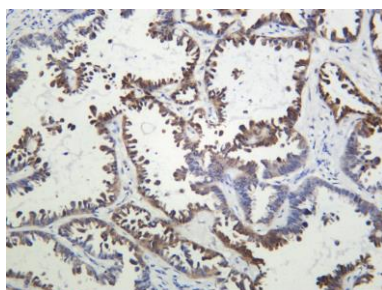
Various whole cell lysates were separated by 4-20% SDS-PAGE, and the membrane was blotted with anti-Drosha antibody. The HRP-conjugated Goat anti-Rabbit IgG (H + L) antibody was used to detect the antibody.

Lane 1: HEK293

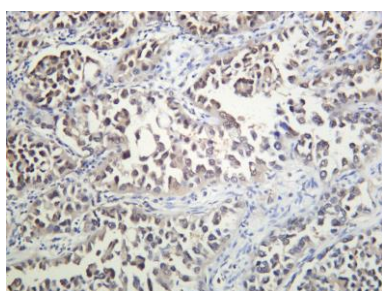
Lane 2: HeLa

Predicted band size: 159kDa

Observed band size: 159kDa



Human lung adenocarcinoma was stained with anti-Drosha Rabbit antibody.



Human lung adenocarcinoma2 was stained with anti-Drosha Rabbit antibody.

For Research Use Only