

GAD-65/67 Rabbit mAb (AR1768)

Key Features

Host Species:	Rabbit
Reactivity:	Human, Mouse, Rat
Applications:	WB, IHC, IF, IP, ELISA
Isotype:	IgG, Kappa
MW:	65kDa, 67kDa (Calculated) 65kDa, 67kDa (Observed)

Recommended Dilution Ratios

IHC:	1:200-1000
WB:	1:10000-50000
IF:	1:200-1000
ELISA:	1:5000-20000
IP:	1:50-200

Storage

-15°C to -25°C/1 year (Do not lower than -25°C)

Basic Information

Clonality	Monoclonal
-----------	------------

Immunogen Information

Specificity	Endogenous
-------------	------------

Target Information

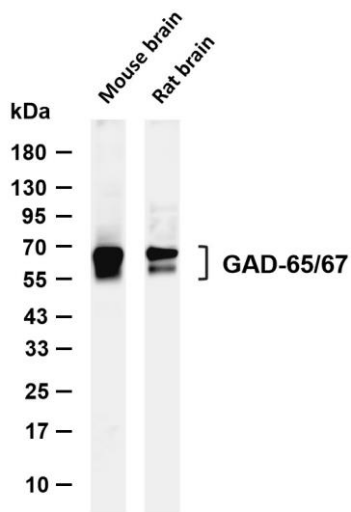
Gene name	GAD1/GAD2
Protein Name	Glutamate decarboxylase 1/2

Organism	Gene ID	UniProt ID
Human	2571; 2572	Q05329; Q99259
Mouse	14415; 14417	

Cellular Localization	intracellular, plasma membrane, vesicle membrane, presynaptic active zone, clathrin-sculpted gamma-aminobutyric acid transport vesicle membrane.
Tissue specificity	[Isoform 1]: Expressed in brain; [Isoform 3]: Expressed in pancreatic islets, testis, adrenal cortex, and perhaps other

endocrine tissues, but not in brain.

Validation Data



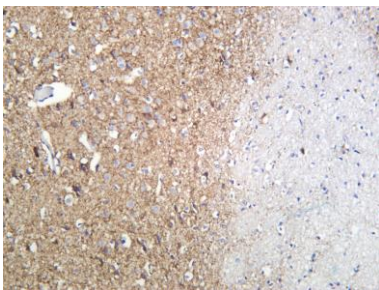
Various whole cell lysates were separated by 4-20% SDS-PAGE, and the membrane was blotted with anti-GAD-65/67 antibody. The HRP-conjugated Goat anti-Rabbit IgG (H + L) antibody was used to detect the antibody.

Lane 1: Mouse brain

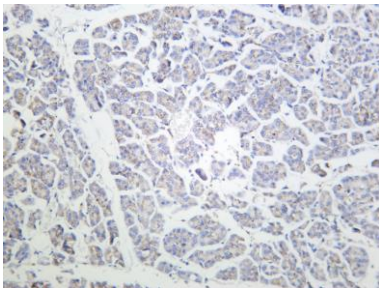
Lane 2: Rat brain

Predicted band size: 65,67kDa

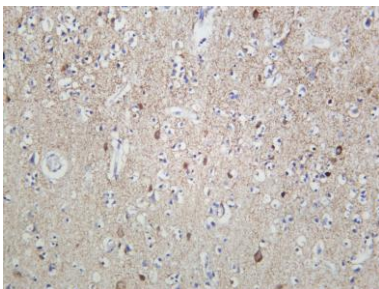
Observed band size: 65,67kDa



Rat brain was stained with anti-GAD-65/67 Rabbit antibody.



Human pancreas was stained with anti-GAD-65/67 Rabbit antibody.



Human brain was stained with anti-GAD-65/67 Rabbit antibody.

For Research Use Only