

CEACAM8 Rabbit pAb (AR20076)

Key Features

Host Species:	Rabbit
Reactivity:	Human
Applications:	WB, ELISA
Isotype:	IgG
MW:	38kD (Observed)

Recommended Dilution Ratios

WB:	1:500-2000
ELISA:	1:5000-20000

Storage

-15°C to -25°C/1 year (Do not lower than -25°C)

Basic Information

Clonality	Polyclonal
-----------	------------

Immunogen Information

Specificity	CEAM8 Polyclonal Antibody detects endogenous levels of protein.
-------------	---

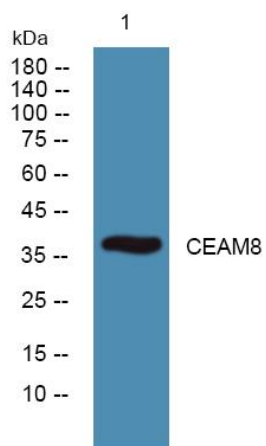
Target Information

Gene name	CEACAM8 CGM6
Protein Name	Carcinoembryonic antigen-related cell adhesion molecule 8 (CD67 antigen) (Carcinoembryonic antigen CGM6) (Non-specific cross-reacting antigen NCA-95) (CD antigen CD66b)

Organism	Gene ID	UniProt ID
Human	1088	P31997

Cellular Localization	Cell membrane ; Lipid-anchor, GPI-anchor . Cell surface .
Tissue specificity	Expressed in leukocytes of chronic myeloid Leukemia patients and bone marrow.

Validation Data



Western blot analysis of lysates from K562 cells, primary antibody was diluted at 1:1000, 4° over night.

For Research Use Only