

SHP-1 Mouse mAb (AM10016)

Key Features

Host Species:	Mouse
Reactivity:	Human
Applications:	WB,IP
MW:	68kD (Observed)

Recommended Dilution Ratios

WB:	1:1000
-----	--------

Storage

-15°C to -25°C/1 year (Do not lower than -25°C)

Basic Information

Clonality	Monoclonal
-----------	------------

Immunogen Information

Specificity	This antibody detects endogenous levels of SHP-1 and does not cross-react with related proteins.
-------------	--

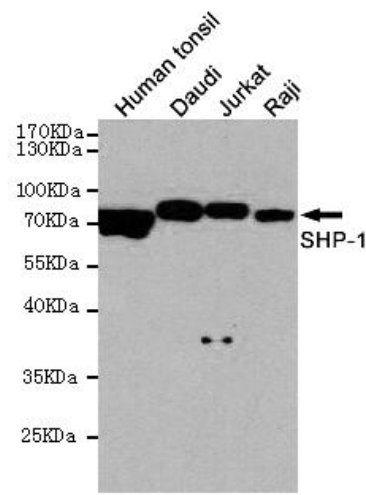
Target Information

Gene name	ptpn6
-----------	-------

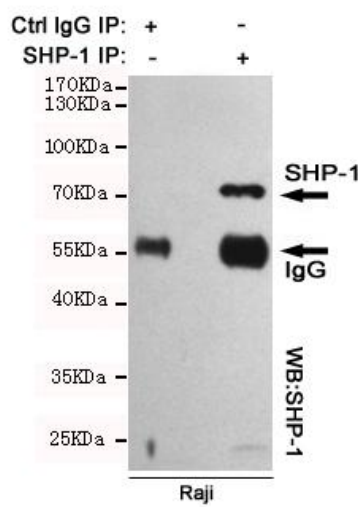
Organism	Gene ID	UniProt ID
Human	5777	P29350
Mouse		P29351

Cellular Localization	Cytoplasm. Nucleus. In neurons, translocates into the nucleus after treatment with angiotensin II (By similarity). Shuttles between the cytoplasm and nucleus via its association with PDPK1.
Tissue specificity	Isoform 1 is expressed in hematopoietic cells. Isoform 2 is expressed in non-hematopoietic cells.

Validation Data



Western blot detection of SHP-1 in Human tonsil,Daudi,Jurkat and Raji cell lysates using SHP-1 mouse mAb (1:1000 diluted).Predicted band size:67KDa.Observed band size:67KDa.



Immunoprecipitation analysis of Raji cell lysates using SHP-1 mouse mAb.

For Research Use Only