

JAK2 (Phospho Tyr1007) Rabbit pAb (AR20074)

Key Features

Host Species:	Rabbit
Reactivity:	Human,Mouse,Rat
Applications:	WB,IHC,IF,ELISA
Isotype:	IgG
MW:	130kD (Observed)

Recommended Dilution Ratios

WB:	1:500-2000
IHC:	1:100-1:300
ELISA:	1:20000
IF:	1:50-200

Storage

-15°C to -25°C/1 year (Do not lower than -25°C)

Basic Information

Clonality	Polyclonal
-----------	------------

Immunogen Information

Specificity	Phospho-JAK2 (Y1007) Polyclonal Antibody detects endogenous levels of JAK2 protein only when phosphorylated at Y1007.The name of modified sites may be influenced by many factors, such as species (the modified site was not originally found in human samples) and the change of protein sequence (the previous protein sequence is incomplete, and the protein sequence may be prolonged with the development of protein sequencing technology). When naming, we will use the "numbers" in historical reference to keep the sites consistent with the reports. The antibody binds to the following modification sequence (lowercase letters are modification sites):KEyYK
-------------	--

Target Information

Gene name	JAK2
Protein Name	Tyrosine-protein kinase JAK2

Organism	Gene ID	UniProt ID
Human	3717	O60674
Mouse	16452	Q62120
Rat	24514	Q62689

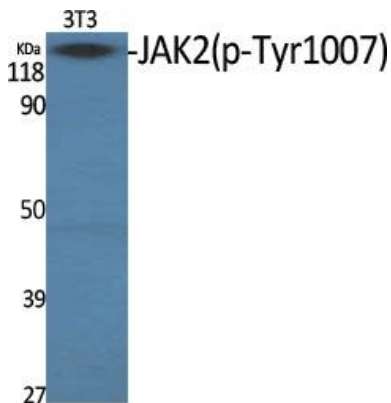
Cellular Localization

Endomembrane system ; Peripheral membrane protein .
Cytoplasm . Nucleus

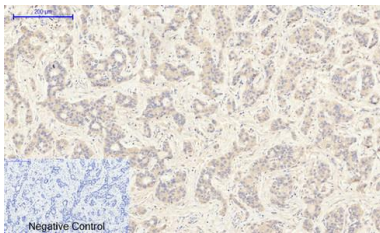
Tissue specificity

Ubiquitously expressed throughout most tissues.

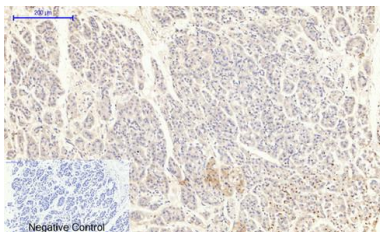
Validation Data



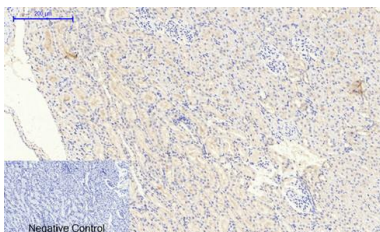
Western Blot analysis of various cells using Phospho-JAK2 (Y1007)
Polyclonal Antibody diluted at 1:1000



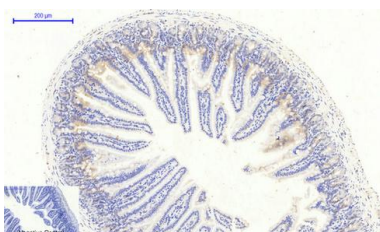
Immunohistochemical analysis of paraffin-embedded Human-liver-cancer tissue. 1,JAK2 (phospho Tyr1007) Polyclonal Antibody was diluted at 1:200(4°C,overnight). 2, Sodium citrate pH 6.0 was used for antibody retrieval(>98°C,20min). 3,Secondary antibody was diluted at 1:200(room tempeRature, 30min). Negative control was used by secondary antibody only.



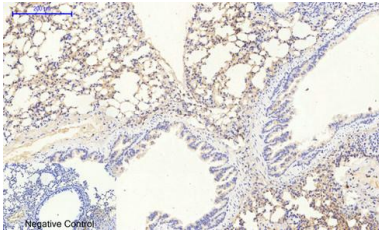
Immunohistochemical analysis of paraffin-embedded Human-stomach-cancer tissue. 1,JAK2 (phospho Tyr1007) Polyclonal Antibody was diluted at 1:200(4°C,overnight). 2, Sodium citrate pH 6.0 was used for antibody retrieval(>98°C,20min). 3,Secondary antibody was diluted at 1:200(room tempeRature, 30min). Negative control was used by secondary antibody only.



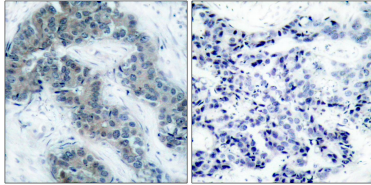
Immunohistochemical analysis of paraffin-embedded Rat-kidney tissue. 1,JAK2 (phospho Tyr1007) Polyclonal Antibody was diluted at 1:200(4°C,overnight). 2, Sodium citrate pH 6.0 was used for antibody retrieval(>98°C,20min). 3,Secondary antibody was diluted at 1:200(room tempeRature, 30min). Negative control was used by secondary antibody only.



Immunohistochemical analysis of paraffin-embedded Mouse-colon tissue. 1,JAK2 (phospho Tyr1007) Polyclonal Antibody was diluted at 1:200(4°C,overnight). 2, Sodium citrate pH 6.0 was used for antibody retrieval(>98°C,20min). 3,Secondary antibody was diluted at 1:200(room tempeRature, 30min). Negative control was used by secondary antibody only



Immunohistochemical analysis of paraffin-embedded Mouse-lung tissue. 1, JAK2 (phospho Tyr1007) Polyclonal Antibody was diluted at 1:200 (4°C, overnight). 2, Sodium citrate pH 6.0 was used for antibody retrieval (>98°C, 20min). 3, Secondary antibody was diluted at 1:200 (room temperature, 30min). Negative control was used by secondary antibody only.



Immunohistochemistry analysis of paraffin-embedded human breast carcinoma, using JAK2 (Phospho-Tyr1007) Antibody. The picture on the right is blocked with the phospho peptide.

For Research Use Only