

## FoxO4 Rabbit mAb (AR1767)

### Key Features

Host Species:	Rabbit
Reactivity:	Human,Mouse,Rat
Applications:	WB,IHC,IF,IP,ELISA
Isotype:	IgG,Kappa
MW:	54kDa (Calculated) 65kDa (Observed)

### Recommended Dilution Ratios

IHC:	1:200-500
WB:	1:2000-10000
IF:	1:200-1000
ELISA:	1:5000-20000
IP:	1:50-200

### Storage

-15°C to -25°C/1 year (Do not lower than -25°C)

### Basic Information

Clonality	Monoclonal
-----------	------------

### Immunogen Information

Specificity	Endogenous
-------------	------------

### Target Information

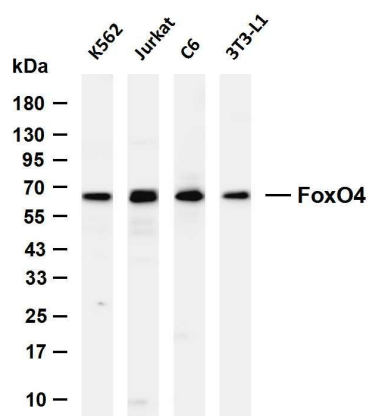
Gene name	FOXO4 AFX AFX1 MLLT7
Protein Name	Forkhead box protein O4

Organism	Gene ID	UniProt ID
Human	4303	P98177
Mouse	54601	Q9WVH3

Cellular Localization	Cytoplasm. Nucleus. When phosphorylated, translocated from nucleus to cytoplasm. Dephosphorylation triggers nuclear translocation. Monoubiquitination increases nuclear localization. When deubiquitinated, translocated from nucleus to cytoplasm.
Tissue specificity	Heart, brain, placenta, lung, liver, skeletal muscle, kidney and

pancreas. Isoform zeta is most abundant in the liver, kidney, and pancreas.

## Validation Data



Various whole cell lysates were separated by 4-20% SDS-PAGE, and the membrane was blotted with anti-FoxO4 antibody. The HRP-conjugated Goat anti-Rabbit IgG (H + L) antibody was used to detect the antibody.

Lane 1: K562

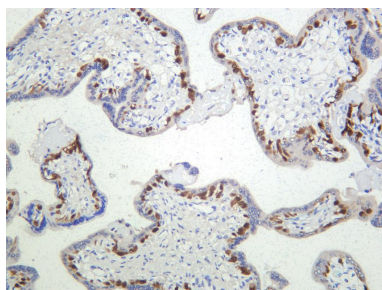
Lane 2: Jurkat

Lane 3: C6

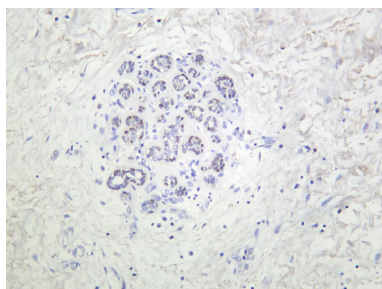
Lane 4: 3T3-L1

Predicted band size: 54kDa

Observed band size: 65kDa



Human placenta was stained with anti-FoxO4 Rabbit antibody.



Human breast carcinoma was stained with anti-FoxO4 Rabbit antibody.

For Research Use Only