

CUL4A/B Rabbit mAb (AR1766)

Key Features

Host Species:	Rabbit
Reactivity:	Human,Mouse,Rat
Applications:	WB,IHC,IF,ELISA
Isotype:	IgG,Kappa
MW:	88 kDa, 104kDa (Calculated) 88 kDa, 104kDa (Observed)

Recommended Dilution Ratios

IHC:	1:200-1000
WB:	1:2000-10000
IF:	1:200-1000
ELISA:	1:5000-20000

Storage

-15°C to -25°C/1 year (Do not lower than -25°C)

Basic Information

Clonality	Monoclonal
-----------	------------

Immunogen Information

Specificity	Endogenous
-------------	------------

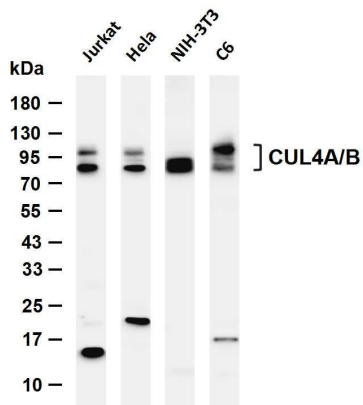
Target Information

Gene name	CUL4A/CUL4B
Protein Name	Cullin-4A (CUL-4A)/Cullin-4B

Organism	Gene ID	UniProt ID
Human	8451; 8450	Q13619; Q13620
Mouse		Q3TCH7; A2A432

Cellular Localization	Nucleus. Cytoplasm.
-----------------------	---------------------

Validation Data



Various whole cell lysates were separated by 4-20% SDS-PAGE, and the membrane was blotted with anti-CUL4A/B antibody. The HRP-conjugated Goat anti-Rabbit IgG (H + L) antibody was used to detect the antibody.

Lane 1: Jurkat

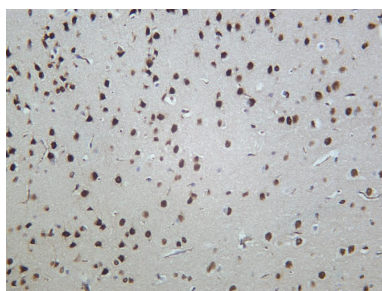
Lane 2: HeLa

Lane 3: NIH-3T3

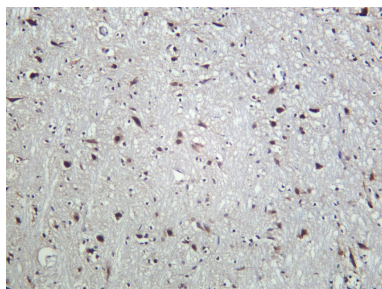
Lane 4: C6

Predicted band size: 88,104kDa

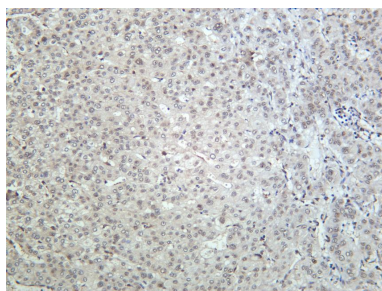
Observed band size: 88,104kDa



Mouse brain was stained with anti-CUL4A/B Rabbit antibody



Rat brain was stained with anti-CUL4A/B Rabbit antibody



Human hepatocellular carcinoma was stained with anti-CUL4A/B Rabbit antibody