

GPX1 Rabbit mAb (AR1765)

Key Features

Host Species:	Rabbit
Reactivity:	Human,Mouse,Rat
Applications:	WB,IHC,IF,IP,ELISA
Isotype:	IgG,Kappa
MW:	22kDa (Calculated) 22kDa (Observed)

Recommended Dilution Ratios

IHC:	1:200-1000
WB:	1:2000-10000
IF:	1:200-1000
ELISA:	1:5000-20000
IP:	1:50-200

Storage

-15°C to -25°C/1 year (Do not lower than -25°C)

Basic Information

Clonality	Monoclonal
-----------	------------

Immunogen Information

Specificity	Endogenous
-------------	------------

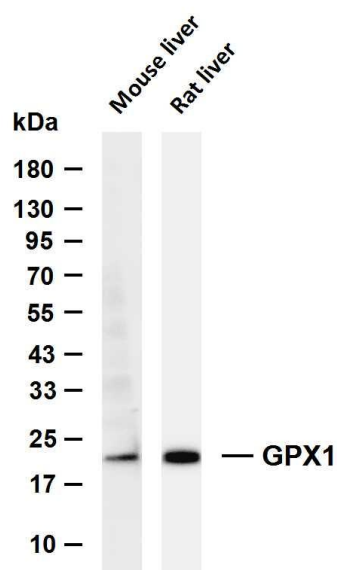
Target Information

Gene name	GPX1
Protein Name	Glutathione peroxidase 1 (GPx-1) (GSHPx-1) (Cellular glutathione peroxidase)

Organism	Gene ID	UniProt ID
Human	2876	P07203
Mouse		P11352
Rat		P04041

Cellular Localization	Cytoplasm.
Tissue specificity	Expressed in platelets (at protein level).

Validation Data



Various whole cell lysates were separated by 4-20% SDS-PAGE, and the membrane was blotted with anti-GPX1 antibody. The HRP-conjugated Goat anti-Rabbit IgG (H + L) antibody was used to detect the antibody.

Lane 1: Mouse liver

Lane 2: Rat liver

Predicted band size: 22kDa

Observed band size: 22kDa

For Research Use Only