

LOX Rabbit mAb (AR1761)

Key Features

Host Species:	Rabbit
Reactivity:	Human,Mouse,Rat
Applications:	WB,IHC,IF,IP,ELISA
Isotype:	IgG,Kappa
MW:	47kDa (Calculated) 54kDa (Observed)

Recommended Dilution Ratios

IHC:	1:200-1000
WB:	1:2000-10000
IF:	1:200-1000
ELISA:	1:5000-20000
IP:	1:50-200

Storage

-15°C to -25°C/1 year (Do not lower than -25°C)

Basic Information

Clonality	Monoclonal
-----------	------------

Immunogen Information

Specificity	Endogenous
-------------	------------

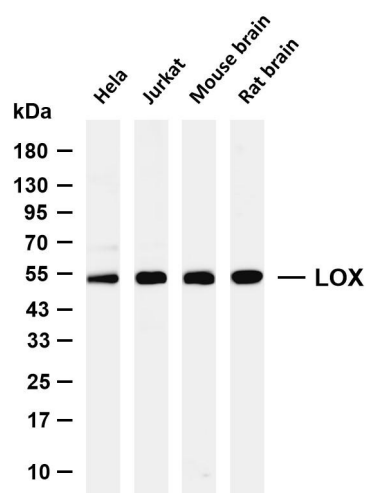
Target Information

Gene name	LOX
Protein Name	Protein-lysine 6-oxidase (Lysyl oxidase)

Organism	Gene ID	UniProt ID
Human	4015	P28300
Mouse	16948	P28301
Rat	24914	P16636

Cellular Localization	Secreted. Secreted, extracellular space.
Tissue specificity	Heart, placenta, skeletal muscle, kidney, lung and pancreas.

Validation Data



Various whole cell lysates were separated by 4-20% SDS-PAGE, and the membrane was blotted with anti-LOX antibody. The HRP-conjugated Goat anti-Rabbit IgG (H + L) antibody was used to detect the antibody.

Lane 1: HeLa

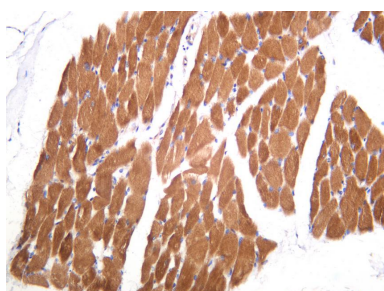
Lane 2: Jurkat

Lane 3: Mouse brain

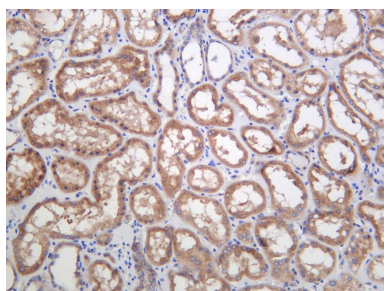
Lane 4: Rat brain

Predicted band size: 47kDa

Observed band size: 54kDa



Human muscle was stained with anti-LOX Rabbit antibody.



Human kidney was stained with anti-LOX Rabbit antibody.

For Research Use Only