

TRAF2 Rabbit mAb (AR1760)

Key Features

Host Species:	Rabbit
Reactivity:	Human,Mouse,Rat
Applications:	WB,IHC,IF,IP,FC
Isotype:	IgG,Kappa
MW:	56kDa (Calculated) 56kDa (Observed)

Recommended Dilution Ratios

IHC:	1:200-1000
WB:	1:2000-10000
IF:	1:200-1000
ELISA:	1:5000-20000
IP:	1:50-200

Storage

-15°C to -25°C/1 year (Do not lower than -25°C)

Basic Information

Clonality	Monoclonal
-----------	------------

Immunogen Information

Specificity	Endogenous
-------------	------------

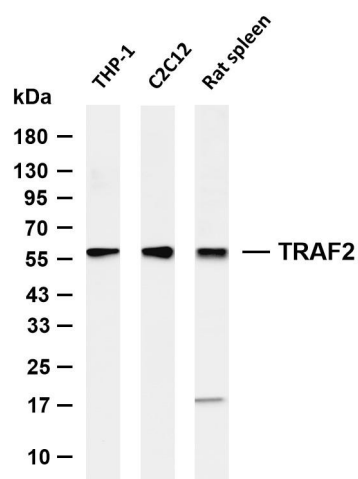
Target Information

Gene name	TRAF2
Protein Name	TNF receptor-associated factor 2

Organism	Gene ID	UniProt ID
Human	7186	Q12933
Mouse	22030	P39429

Cellular Localization	Cytoplasm.
Tissue specificity	Brain, Cerebellum, Colon, Fetal brain, Human endometrium, Kidney, Leukocyte, Spleen

Validation Data



Various whole cell lysates were separated by 4-20% SDS-PAGE, and the membrane was blotted with anti-TRAF2 antibody. The HRP-conjugated Goat anti-Rabbit IgG (H + L) antibody was used to detect the antibody.

Lane 1: THP-1

Lane 2: C2C12

Lane 3: Rat spleen

Predicted band size: 56kDa

Observed band size: 56kDa

For Research Use Only