

# Nucleophosmin Rabbit mAb (AR1759)

## Key Features

Host Species:	Rabbit
Reactivity:	Human,Mouse,Rat
Applications:	WB,IHC,IF,IP,ELISA
Isotype:	IgG,Kappa
MW:	33kDa (Calculated) 38kDa (Observed)

## Recommended Dilution Ratios

IHC:	1:200-1000
WB:	1:2000-10000
IF:	1:200-1000
ELISA:	1:5000-20000
IP:	1:50-200

## Storage

-15°C to -25°C/1 year (Do not lower than -25°C)

## Basic Information

Clonality	Monoclonal
-----------	------------

## Immunogen Information

Specificity	Endogenous
-------------	------------

## Target Information

Gene name	NPM1 NPM
Protein Name	Nucleophosmin

Organism	Gene ID	UniProt ID
Human	4869	P06748
Mouse	18148	Q61937
Rat	25498	P13084

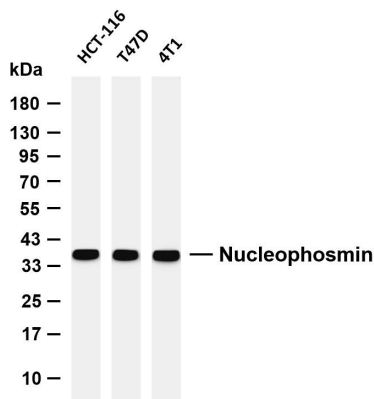
Cellular Localization	Nucleus, nucleolus. nucleoplasm. Cytoplasm, cytoskeleton, microtubule organizing center, centrosome. Generally nucleolar, but is translocated to the nucleoplasm in case of serum starvation or treatment with anticancer drugs. Has been found in the
-----------------------	--

cytoplasm in patients with primary acute myelogenous leukemia (AML), but not with secondary AML. Can shuttle between cytoplasm and nucleus. Co-localizes with the methylated form of RPS10 in the granular component (GC) region of the nucleolus. Colocalized with nucleolin and APEX1 in nucleoli. Isoform 1 of NEK2 is required for its localization to the centrosome during mitosis.

Tissue specificity

Amnion, B-cell lymphoma, Bone marrow, Brain, Cervix carcinoma, Colon carcinoma, Epithelium, Kidney

## Validation Data



Various whole cell lysates were separated by 4-20% SDS-PAGE, and the membrane was blotted with anti-Nucleophosmin antibody. The HRP-conjugated Goat anti-Rabbit IgG (H + L) antibody was used to detect the antibody.

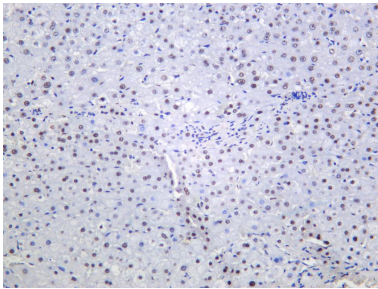
Lane 1: HCT-116

Lane 2: T47D

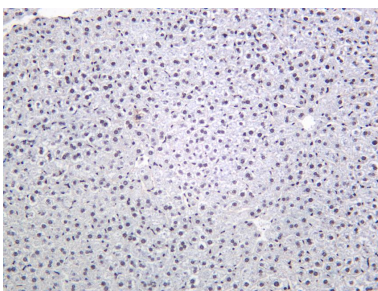
Lane 3: 4T1

Predicted band size: 33kDa

Observed band size: 38kDa



Human liver was stained with anti-Nucleophosmin Rabbit antibody



Mouse liver was stained with anti-Nucleophosmin Rabbit antibody

For Research Use Only

