

## STK3 Rabbit mAb (AR1750)

### Key Features

Host Species:	Rabbit
Reactivity:	Human,Mouse,Rat
Applications:	WB,IHC,IF,IP,ELISA
Isotype:	IgG,Kappa
MW:	56kDa (Calculated) 56kDa (Observed)

### Recommended Dilution Ratios

IHC:	1:100-500
WB:	1:2000-10000
IF:	1:200-1000
ELISA:	1:5000-20000
IP:	1:50-200

### Storage

-15°C to -25°C/1 year (Do not lower than -25°C)

### Basic Information

Clonality	Monoclonal
-----------	------------

### Immunogen Information

Specificity	Endogenous
-------------	------------

### Target Information

Gene name	STK3 KRS1 MST2
Protein Name	Serine/threonine-protein kinase 3 (Mammalian STE20-like protein kinase 2) (MST-2) (STE20 like kinase MST2) (Serine/threonine-protein kinase Krs-1)

Organism	Gene ID	UniProt ID
Human	6788	Q13188
Mouse		Q9JI10
Rat		O54748

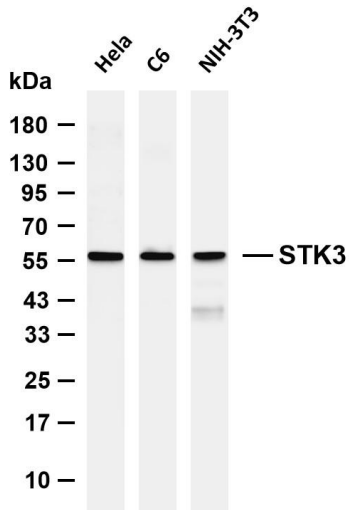
Cellular Localization	Cytoplasm. Nucleus. The caspase-cleaved form cycles between nucleus and cytoplasm (PubMed:19525978, PubMed:11278283).
-----------------------	---

Phosphorylation at Thr-117 leads to inhibition of nuclear translocation (PubMed:19525978).

Expressed at high levels in adult kidney, skeletal and placenta tissues and at very low levels in adult heart, lung and brain tissues.

Tissue specificity

## Validation Data



Various whole cell lysates were separated by 4-20% SDS-PAGE, and the membrane was blotted with anti-STK3 antibody. The HRP conjugated Goat anti-Rabbit IgG (H + L) antibody was used to detect the antibody.

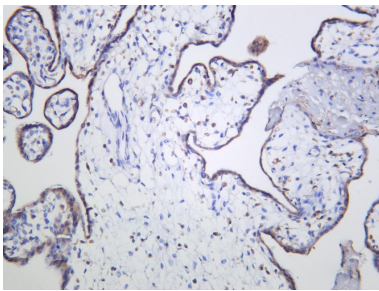
Lane 1: HeLa

Lane 2: C6

Lane 3: NIH-3T3

Predicted band size: 56kDa

Observed band size: 56kDa



Human placenta was stained with anti-STK3 Rabbit antibody.

For Research Use Only