

## SH-PTP1 Rabbit mAb (AR1752)

### Key Features

Host Species:	Rabbit
Reactivity:	Human, Mouse, Rat
Applications:	WB, IHC, IF, ELISA
Isotype:	IgG, Kappa
MW:	68kDa (Calculated) 68kDa (Observed)

### Recommended Dilution Ratios

IHC:	1:500-1000
WB:	1:2000-10000
IF:	1:200-1000
ELISA:	1:5000-20000

### Storage

-15°C to -25°C/1 year (Do not lower than -25°C)

### Basic Information

Clonality	Monoclonal
-----------	------------

### Immunogen Information

Specificity	Endogenous
-------------	------------

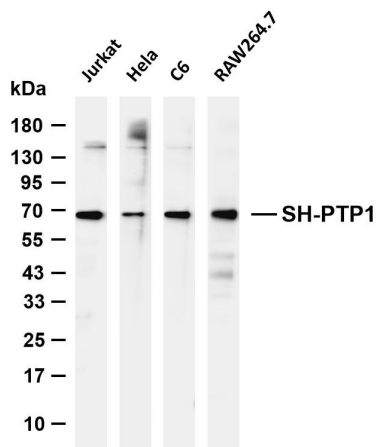
### Target Information

Gene name	PTPN6
Protein Name	Tyrosine-protein phosphatase non-receptor type 6

Organism	Gene ID	UniProt ID
Human	5777	P29350
Mouse	15170	P29351
Rat	116689	P81718

Cellular Localization	Cytoplasm. Nucleus. In neurons, translocates into the nucleus after treatment with angiotensin II (By similarity). Shuttles between the cytoplasm and nucleus via its association with PDPK1.
Tissue specificity	Isoform 1 is expressed in hematopoietic cells. Isoform 2 is expressed in non-hematopoietic cells.

## Validation Data



Various whole cell lysates were separated by 4-20% SDS-PAGE, and the membrane was blotted with anti-SH-PTP1 antibody. The HRP conjugated Goat anti-Rabbit IgG (H + L) antibody was used to detect the antibody.

Lane 1: Jurkat

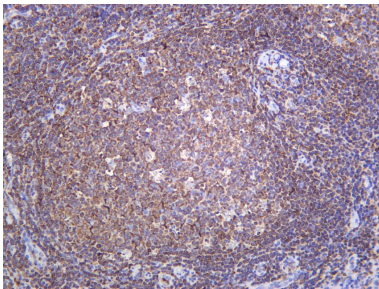
Lane 2: HeLa

Lane 3: C6

Lane 4: RAW264.7

Predicted band size: 68kDa

Observed band size: 68kDa



Human tonsil was stained with anti-SH-PTP1 Rabbit antibody.

For Research Use Only