

PAKy Rabbit mAb (AR1751)

Key Features

Host Species:	Rabbit
Reactivity:	Human,Mouse,Rat
Applications:	WB,IHC,IF,ELISA
Isotype:	IgG,Kappa
MW:	58kDa (Calculated) 58kDa (Observed)

Recommended Dilution Ratios

IHC:	1:200-1000
WB:	1:2000-10000
IF:	1:200-1000
ELISA:	1:5000-20000

Storage

-15°C to -25°C/1 year (Do not lower than -25°C)

Basic Information

Clonality	Monoclonal
-----------	------------

Immunogen Information

Specificity	Endogenous
-------------	------------

Target Information

Gene name	PAK2
Protein Name	Serine/threonine-protein kinase PAK 2

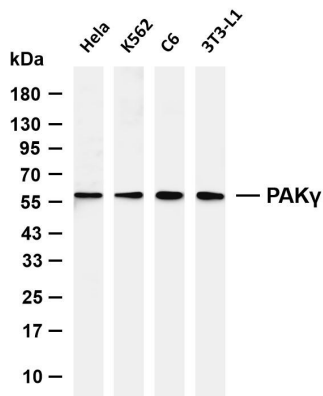
Organism	Gene ID	UniProt ID
Human	5062	Q13177
Mouse	224105	Q8CIN4
Rat	29432	Q64303

Cellular Localization

[Serine/threonine-protein kinase PAK 2]: Cytoplasm. MYO18A mediates the cellular distribution of the PAK2-ARHGEF7-GIT1 complex to the inner surface of the cell membrane.; [PAK-2p34]: Nucleus. Cytoplasm, perinuclear region. Membrane; Lipid-anchor. Interaction with ARHGAP10 probably changes PAK-2p34 location

Tissue specificity

Validation Data



to cytoplasmic perinuclear region. Myristoylation changes PAK-2p34 location to the membrane.

Ubiquitously expressed. Higher levels seen in skeletal muscle, ovary, thymus and spleen.

Various whole cell lysates were separated by 4-20% SDS-PAGE, and the membrane was blotted with anti-PAKγ antibody. The HRP conjugated Goat anti-Rabbit IgG (H + L) antibody was used to detect the antibody.

Lane 1: HeLa

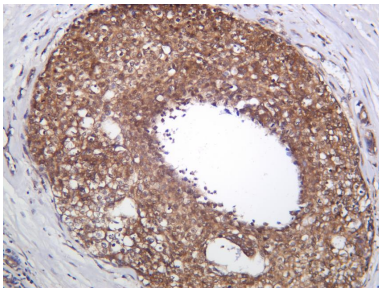
Lane 2: K562

Lane 3: C6

Lane 4: 3T3-L1

Predicted band size: 58kDa

Observed band size: 58kDa



Human breast carcinoma was stained with anti-PAKγ Rabbit antibody.

For Research Use Only