

YB-1 Rabbit mAb (AR1748)

Key Features

Host Species:	Rabbit
Reactivity:	Human, Mouse, Rat
Applications:	WB, IHC, IF, IP, ELISA
Isotype:	IgG, Kappa
MW:	36kDa (Calculated) 49kDa (Observed)

Recommended Dilution Ratios

IHC:	1:200-1000
WB:	1:2000-10000
IF:	1:200-1000
ELISA:	1:5000-20000
IP:	1:50-200

Storage

-15°C to -25°C/1 year (Do not lower than -25°C)

Basic Information

Clonality	Monoclonal
-----------	------------

Immunogen Information

Specificity	Endogenous
-------------	------------

Target Information

Gene name	YBX1
Protein Name	Nuclease-sensitive element-binding protein 1

Organism	Gene ID	UniProt ID
Human	4904	P67809
Mouse	22608	P62960
Rat	500538	P62961

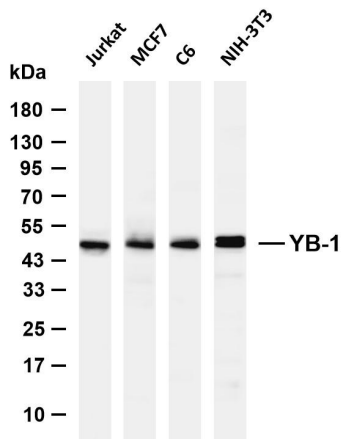
Cellular Localization	Cytoplasm. Nucleus. Cytoplasmic granule. Secreted. Secreted, extracellular exosome. Predominantly cytoplasmic in proliferating cells (PubMed:12604611). Cytotoxic stress and DNA damage enhance translocation to the nucleus (PubMed:14718551).
-----------------------	---

Localized in cytoplasmic mRNP granules containing untranslated mRNAs (PubMed:25229427). Shuttles between nucleus and cytoplasm (PubMed:25229427). Localized with DDX1, MBNL1 and TIAL1 in stress granules upon stress (PubMed:18335541). Secreted by mesangial and monocytic cells after inflammatory challenges (PubMed:19483673).

Tissue specificity

Adrenal cortex, Bone marrow, Brain, Epithelium, Eye, Kidney, Lung, Muscle, Placenta, Skin

Validation Data



Various whole cell lysates were separated by 4-20% SDS-PAGE, and the membrane was blotted with anti-YB-1 antibody. The HRP conjugated Goat anti-Rabbit IgG (H + L) antibody was used to detect the antibody.

Lane 1: Jurkat

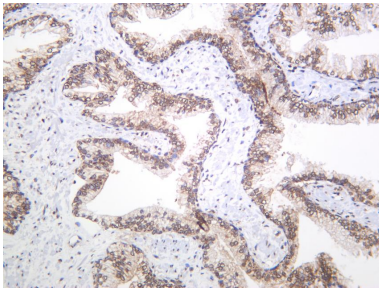
Lane 2: MCF7

Lane 3: C6

Lane 4: NIH-3T3

Predicted band size: 36kDa

Observed band size: 49kDa



Human prostate carcinoma was stained with anti-YB-1 Rabbit antibody.

For Research Use Only