

FRS2 Rabbit mAb (AR1747)

Key Features

Host Species:	Rabbit
Reactivity:	Human, Mouse, Rat
Applications:	WB, IF, IP, ELISA
Isotype:	IgG, Kappa
MW:	57kDa (Calculated) 80kDa (Observed)

Recommended Dilution Ratios

WB:	1:2000-10000
IF:	1:200-1000
ELISA:	1:5000-20000
IP:	1:50-200

Storage

-15°C to -25°C/1 year (Do not lower than -25°C)

Basic Information

Clonality	Monoclonal
-----------	------------

Immunogen Information

Specificity	Endogenous
-------------	------------

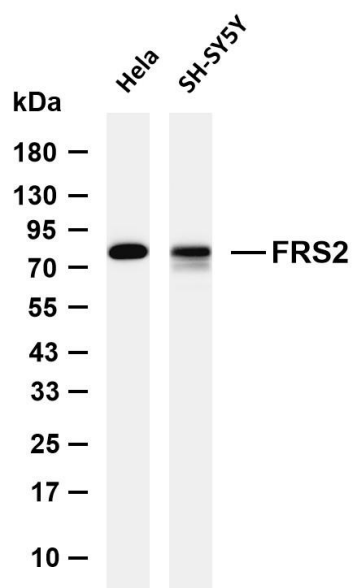
Target Information

Gene name	FRS2
Protein Name	Fibroblast growth factor receptor substrate 2

Organism	Gene ID	UniProt ID
Human	10818	Q8WU20
Mouse	327826	Q8C180

Cellular Localization	Endomembrane system. Cytoplasmic, membrane-bound.
Tissue specificity	Highly expressed in heart, brain, spleen, lung, liver, skeletal muscle, kidney and testis.

Validation Data



Various whole cell lysates were separated by 4-20% SDS-PAGE, and the membrane was blotted with anti-FRS2 antibody. The HRP conjugated Goat anti-Rabbit IgG (H + L) antibody was used to detect the antibody.

Lane 1: HeLa

Lane 2: SH-SY5Y

Predicted band size: 57kDa

Observed band size: 80kDa

For Research Use Only