

## MCM2 Rabbit mAb (AR1744)

### Key Features

Host Species:	Rabbit
Reactivity:	Human, Mouse, Rat
Applications:	WB, IHC, IF, ELISA
Isotype:	IgG, Kappa
MW:	102kDa (Calculated) 125kDa (Observed)

### Recommended Dilution Ratios

IHC:	1:200-1000
WB:	1:2000-10000
IF:	1:200-1000
ELISA:	1:5000-20000

### Storage

-15°C to -25°C/1 year (Do not lower than -25°C)

### Basic Information

Clonality	Monoclonal
-----------	------------

### Immunogen Information

Specificity	Endogenous
-------------	------------

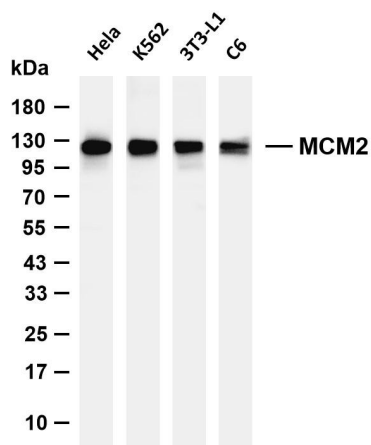
### Target Information

Gene name	MCM2 BM28 CCNL1 CDCL1 KIAA0030
Protein Name	DNA replication licensing factor MCM2

Organism	Gene ID	UniProt ID
Human	4171	P49736
Mouse	17216	P97310

Cellular Localization	Nucleus. Chromosome. Associated with chromatin before the formation of nuclei and detaches from it as DNA replication progresses.
Tissue specificity	Bone marrow, Brain, Cervix carcinoma, Colon carcinoma, Epithelia

## Validation Data



Various whole cell lysates were separated by 4-20% SDS-PAGE, and the membrane was blotted with anti-MCM2 (PT1052R) antibody. The HRP conjugated Goat anti-Rabbit IgG (H + L) antibody was used to detect the antibody.

Lane 1: HeLa

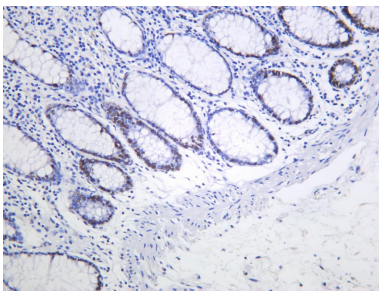
Lane 2: K562

Lane 3: 3T3-L1

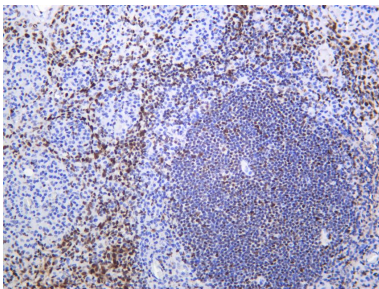
Lane 4: C6

Predicted band size: 102kDa

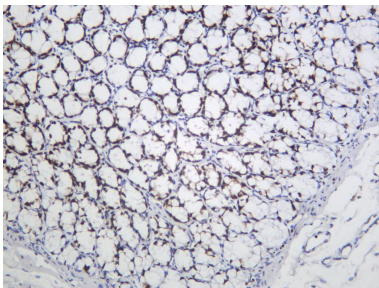
Observed band size: 125kDa



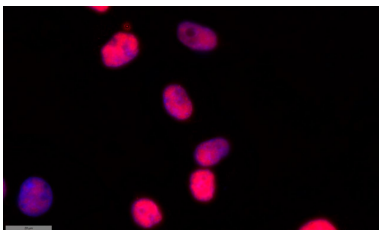
Human colon was stained with anti-MCM2 Rabbit antibody.



Human tonsil was stained with anti-MCM2 Rabbit antibody.



Mouse colon was stained with anti-MCM2 Rabbit antibody.



Immunofluorescence analysis of SiHa cell.

1. primary Antibody was diluted at 1:100(4°C overnight).
2. Goat Anti Rabbit IgG (H&L) - AFfluor 594 Secondary antibody was diluted at 1:500(room temperature, 50min).