

## Fos B Rabbit mAb (AR1743)

### Key Features

Host Species:	Rabbit
Reactivity:	Human, Mouse, Rat
Applications:	WB, IHC, IF, IP, ELISA
Isotype:	IgG, Kappa
MW:	36kDa (Calculated) 38kDa, 48kDa (Observed)

### Recommended Dilution Ratios

IHC:	1:200-1000
WB:	1:2000-10000
IF:	1:200-1000
ELISA:	1:5000-20000
IP:	1:50-200

### Storage

-15°C to -25°C/1 year (Do not lower than -25°C)

### Basic Information

Clonality	Monoclonal
-----------	------------

### Immunogen Information

Specificity	Endogenous
-------------	------------

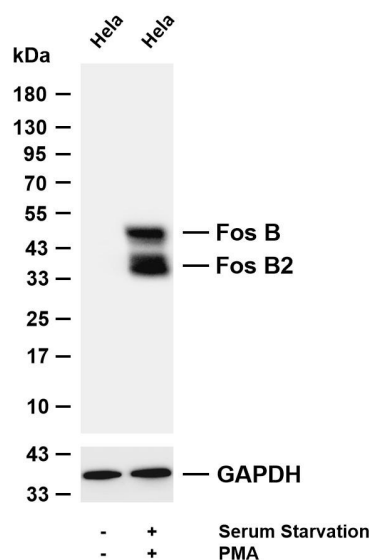
### Target Information

Gene name	FOSB
Protein Name	Protein fosB

Organism	Gene ID	UniProt ID
Human	2354	P53539
Mouse	14282	P13346

Cellular Localization	Nucleus
Tissue specificity	[Isoform 11]: Expressed in the nucleus accumbens of the striatum (at protein level).

## Validation Data



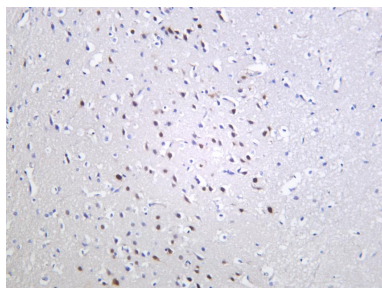
Various whole cell lysates were separated by 4-20% SDS-PAGE, and the membrane was blotted with anti-Fos B antibody. The HRP conjugated Goat anti-Rabbit IgG (H + L) antibody was used to detect the antibody.

Lane 1: HeLa

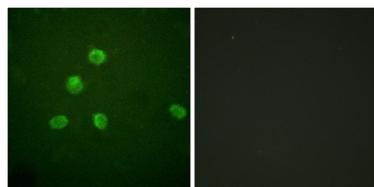
Lane 2: HeLa

Predicted band size: 36kDa

Observed band size: 48 kDa Fos B, 38 kDa Fos B2



Rat hippocampus was stained with anti-Fos B Rabbit antibody.



Immunofluorescence analysis of HepG2 cells, using FosB Antibody. The picture on the right is blocked with the synthesized peptide.

For Research Use Only