

## PKD1 Rabbit mAb (AR1742)

### Key Features

Host Species:	Rabbit
Reactivity:	Human, Mouse, Rat
Applications:	WB, IHC, IF, ELISA
Isotype:	IgG, Kappa
MW:	102kDa (Calculated) 102kDa (Observed)

### Recommended Dilution Ratios

IHC:	1:200-1000
WB:	1:2000-10000
IF:	1:200-1000
ELISA:	1:5000-20000

### Storage

-15°C to -25°C/1 year (Do not lower than -25°C)

### Basic Information

Clonality	Monoclonal
-----------	------------

### Immunogen Information

Specificity	Endogenous
-------------	------------

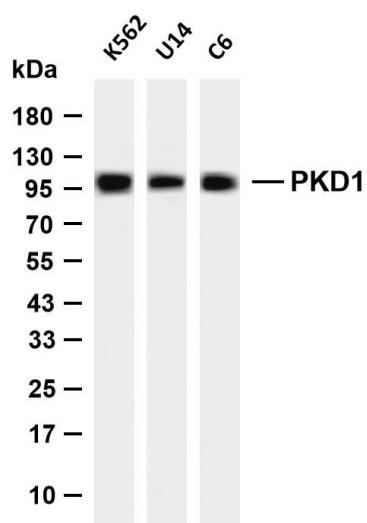
### Target Information

Gene name	PRKD1
Protein Name	Serine/threonine-protein kinase D1

Organism	Gene ID	UniProt ID
Human	5587	Q15139
Mouse	18760	Q62101
Rat	85421	Q9WTQ1

Cellular Localization	Cytoplasm. Cell membrane. Golgi apparatus, trans-Golgi network. Translocation to the cell membrane is required for kinase activation.
Tissue specificity	Placenta, Testis

## Validation Data



Various whole cell lysates were separated by 4-20% SDS-PAGE, and the membrane was blotted with anti-PKD1 antibody. The HRP conjugated Goat anti-Rabbit IgG (H + L) antibody was used to detect the antibody.

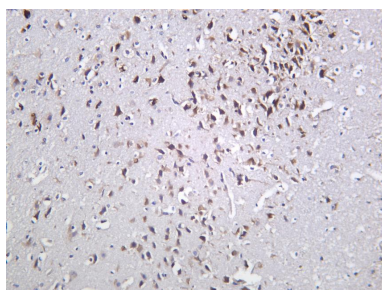
Lane 1: K562

Lane 2: U14

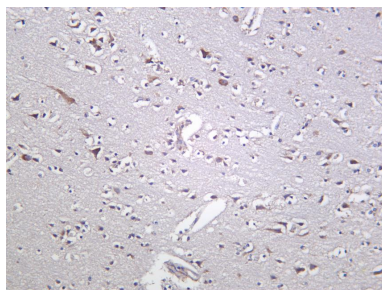
Lane 3: C6

Predicted band size: 102kDa

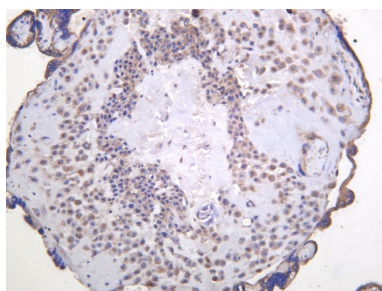
Observed band size: 102kDa



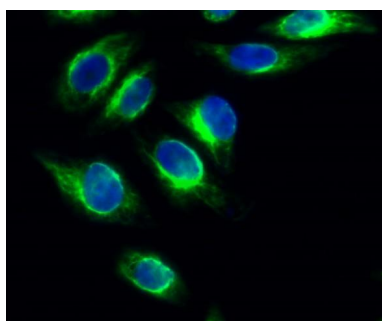
Rat brain was stained with anti-PKD1 Rabbit antibody



Human brain was stained with anti-PKD1 Rabbit antibody



Human placenta was stained with anti-PKD1 Rabbit antibody



Immunofluorescence analysis of HeLa cell.

1. PKD1 Antibody(green) was diluted at 1:200(4° overnight).
2. Goat Anti Rabbit Alexa Fluor 488 was diluted at 1:1000(room temperature, 50min).
3. DAPI(blue) 10min.

