

## Nibrin Rabbit mAb (AR1741)

### Key Features

Host Species:	Rabbit
Reactivity:	Human,Mouse,Rat
Applications:	WB,IHC,IF,IP,ELISA
Isotype:	IgG,Kappa
MW:	85kDa (Calculated) 95kDa (Observed)

### Recommended Dilution Ratios

IHC:	1:200-1000
WB:	1:2000-10000
IF:	1:200-1000
ELISA:	1:5000-20000
IP:	1:50-200

### Storage

-15°C to -25°C/1 year (Do not lower than -25°C)

### Basic Information

Clonality	Monoclonal
-----------	------------

### Immunogen Information

Specificity	Endogenous
-------------	------------

### Target Information

Gene name	NBN
Protein Name	Nibrin

Organism	Gene ID	UniProt ID
Human	4683	O60934
Mouse	27354	Q9R207
Rat	85482	Q9JIL9

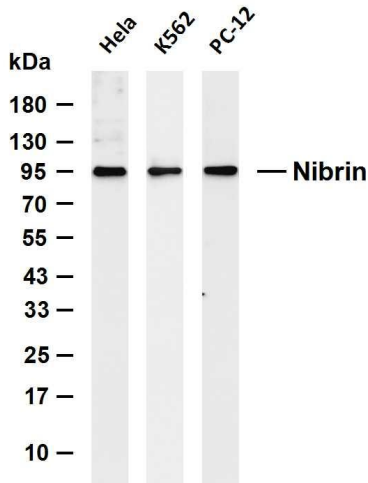
Cellular Localization	Nucleus. Nucleus, PML body. Chromosome, telomere. Chromosome. Localizes to discrete nuclear foci after treatment with genotoxic agents (PubMed:26438602, PubMed:10783165, PubMed:26215093). Acetylation of 'Lys-5' of histone H2AX
-----------------------	--

(H2AXK5ac) promotes NBN/NBS1 assembly at the sites of DNA damage (PubMed:26438602).

Ubiquitous (PubMed:9590180). Expressed at high levels in testis (PubMed:9590180).

Tissue specificity

## Validation Data



Various whole cell lysates were separated by 4-20% SDS-PAGE, and the membrane was blotted with anti-Nibrin antibody. The HRP conjugated Goat anti-Rabbit IgG (H + L) antibody was used to detect the antibody.

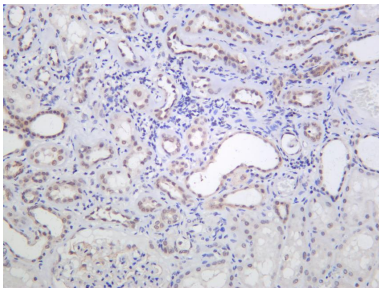
Lane 1: HeLa

Lane 2: K562

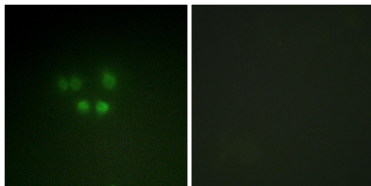
Lane 3: PC-12

Predicted band size: 85kDa

Observed band size: 95kDa



Human kidney was stained with anti-Nibrin Rabbit antibody



Immunofluorescence analysis of A549 cells, using Nibrin Antibody. The picture on the right is blocked with the synthesized peptide.

For Research Use Only