

Crk-L Rabbit mAb (AR1740)

Key Features

Host Species:	Rabbit
Reactivity:	Human, Mouse, Rat
Applications:	WB, IHC, IF, IP, ELISA
Isotype:	IgG, Kappa
MW:	34kDa (Calculated) 39kDa (Observed)

Recommended Dilution Ratios

IHC:	1:200-1000
WB:	1:2000-10000
IF:	1:200-1000
ELISA:	1:5000-20000
IP:	1:50-200

Storage

-15°C to -25°C/1 year (Do not lower than -25°C)

Basic Information

Clonality	Monoclonal
-----------	------------

Immunogen Information

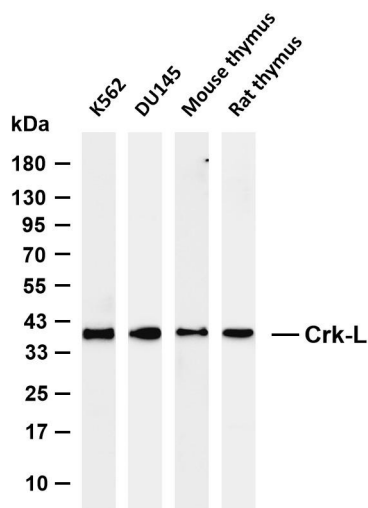
Specificity	Endogenous
-------------	------------

Target Information

Gene name	CRKL
Protein Name	Crk-like protein

	Organism	Gene ID	UniProt ID
	Human	1399	P46109
	Mouse	12929	P47941
	Rat	287942	Q5U2U2
Cellular Localization	endosome, cytosol, cell-cell adherens junction, extracellular exosome		
Tissue specificity	Skin, Spleen		

Validation Data



Various whole cell lysates were separated by 4-20% SDS-PAGE, and the membrane was blotted with anti-Crk-L antibody. The HRP conjugated Goat anti-Rabbit IgG (H + L) antibody was used to detect the antibody.

Lane 1: K562

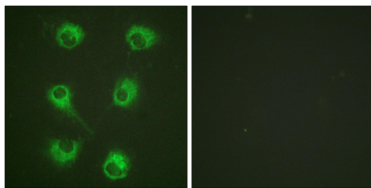
Lane 2: DU145

Lane 3: Mouse thymus

Lane 4: Rat thymus

Predicted band size: 34kDa

Observed band size: 39kDa



Immunofluorescence analysis of HUVEC cells, using CrkL Antibody. The picture on the right is blocked with the synthesized peptide.

For Research Use Only