

TXD12 Rabbit mAb (AR1739)

Key Features

Host Species:	Rabbit
Reactivity:	Human,Mouse,Rat
Applications:	WB,IHC,IF,ELISA
Isotype:	IgG,Kappa
MW:	19kDa (Calculated) 19kDa (Observed)

Recommended Dilution Ratios

IHC:	1:500-2000
WB:	1:2000-10000
IF:	1:200-1000
ELISA:	1:5000-20000

Storage

-15°C to -25°C/1 year (Do not lower than -25°C)

Basic Information

Clonality	Monoclonal
-----------	------------

Immunogen Information

Specificity	Endogenous
-------------	------------

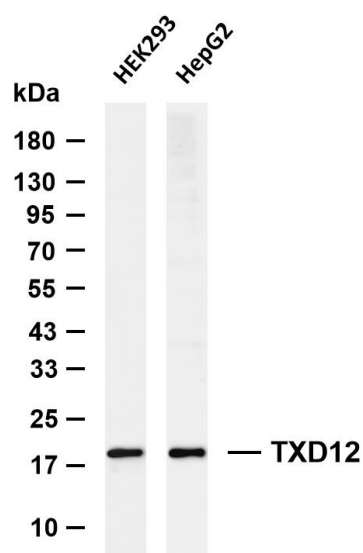
Target Information

Gene name	TXNDC12 TLP19 UNQ713/PRO1376
Protein Name	TXD12

Organism	Gene ID	UniProt ID
Human	51060	O95881
Mouse	66073	Q9CQU0
Rat	298370	Q498E0

Cellular Localization	Endoplasmic reticulum lumen
Tissue specificity	Widely expressed

Validation Data



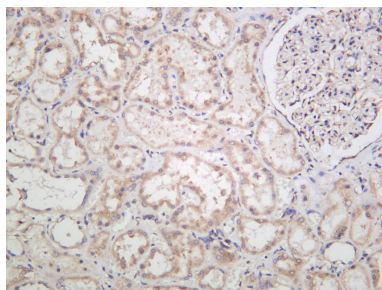
Various whole cell lysates were separated by 4-20% SDS-PAGE, and the membrane was blotted with anti-TXD12 antibody. The HRP conjugated Goat anti-Rabbit IgG (H + L) antibody was used to detect the antibody.

Lane 1: HEK293

Lane 2: HepG2

Predicted band size: 19kDa

Observed band size: 19kDa



Human kidney was stained with anti-TXD12 Rabbit antibody

For Research Use Only