

## ANXA5 Rabbit mAb (AR1738)

### Key Features

Host Species:	Rabbit
Reactivity:	Human,Mouse,Rat
Applications:	WB,IHC,IF,ELISA
Isotype:	IgG,Kappa
MW:	36kDa (Calculated) 36kDa (Observed)

### Recommended Dilution Ratios

IHC:	1:2000-10000
WB:	1:2000-10000
IF:	1:200-1000
ELISA:	1:5000-20000

### Storage

-15°C to -25°C/1 year (Do not lower than -25°C)

### Basic Information

Clonality	Monoclonal
-----------	------------

### Immunogen Information

Specificity	Endogenous
-------------	------------

### Target Information

Gene name	ANXA5 ANX5 ENX2 PP4 Annexin A5 (Anchoring II) (Annexin V) (Annexin-5) (Calphobindin I) (CBP-I) (Endonexin II) (Lipocortin V) (Placental anticoagulant protein 4) (PP4) (Placental anticoagulant protein I) (PAP-I) (Thromboplastin inhibitor) (Vascular anticoagulant-alpha) (VAC-alpha)
Protein Name	

Organism	Gene ID	UniProt ID
Human	308	P08758
Mouse		P48036
Rat		P14668

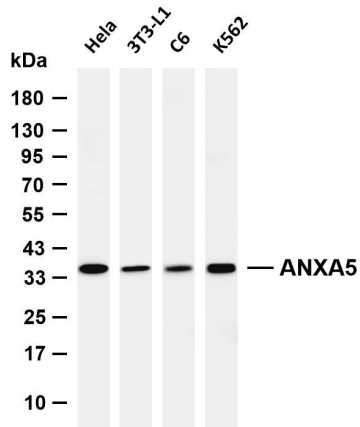
Cellular Localization	intracellular, cytoplasm, focal adhesion, external side of plasma
-----------------------	---

membrane, membrane, extracellular exosome, endothelial microparticle

Tissue specificity

Adipocyte, Epithelium, Lung, Melanoma, Muscle, Ovary, Placenta, Skin

## Validation Data



Various whole cell lysates were separated by 4-20% SDS-PAGE, and the membrane was blotted with anti-ANXA5 antibody. The HRP conjugated Goat anti-Rabbit IgG (H + L) antibody was used to detect the antibody.

Lane 1: HeLa

Lane 2: 3T3-L1

Lane 3: C6

Lane 4: K562

Predicted band size: 36kDa

Observed band size: 36kDa

For Research Use Only