

## FBX32 Rabbit mAb (AR1737)

### Key Features

Host Species:	Rabbit
Reactivity:	Human, Mouse, Rat
Applications:	WB, IF, ELISA
Isotype:	IgG, Kappa
MW:	42kD (Calculated) 42kD (Observed)

### Recommended Dilution Ratios

WB:	1:2000-10000
IF:	1:200-1000
ELISA:	1:5000-20000

### Storage

-15°C to -25°C/1 year (Do not lower than -25°C)

### Basic Information

Clonality	Monoclonal
-----------	------------

### Immunogen Information

Specificity	Endogenous
-------------	------------

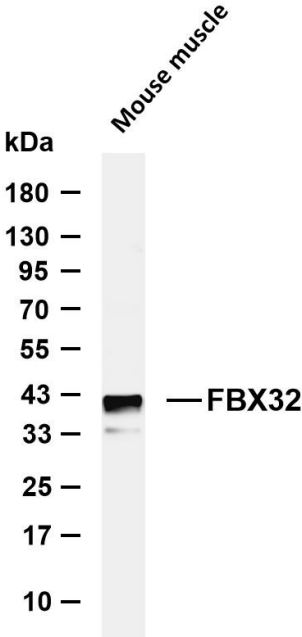
### Target Information

Gene name	FBXO32
Protein Name	FBX32

Organism	Gene ID	UniProt ID
Human	114907	Q969P5
Mouse	67731	Q9CPU7
Rat	171043	Q91Z62

Cellular Localization	Cytoplasm. Nucleus. Shuttles between cytoplasm and the nucleus.
Tissue specificity	Specifically expressed in cardiac and skeletal muscle.

Validation Data



Various whole cell lysates were separated by 4-20% SDS-PAGE, and the membrane was blotted with anti-FBX32 antibody. The HRP conjugated Goat anti-Rabbit IgG (H + L) antibody was used to detect the antibody.

Lane 1: Mouse muscle

Predicted band size: 42kDa

Observed band size: 42kDa

For Research Use Only