

CHD4 Rabbit mAb (AR1719)

Key Features

Host Species:	Rabbit
Reactivity:	Human, Mouse
Applications:	WB, IF, ELISA
Isotype:	IgG, Kappa
MW:	218kDa (Calculated) 260kDa (Observed)

Recommended Dilution Ratios

WB:	1:2000-10000
IF:	1:200-1000
ELISA:	1:5000-20000

Storage

-15°C to -25°C/1 year (Do not lower than -25°C)

Basic Information

Clonality	Monoclonal
-----------	------------

Immunogen Information

Specificity	Endogenous
-------------	------------

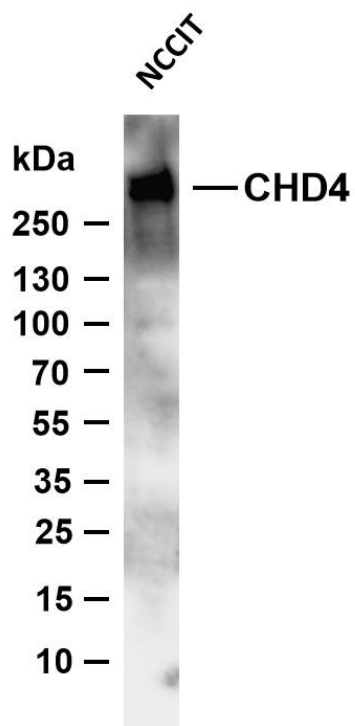
Target Information

Gene name	CHD4
Protein Name	Chromodomain-helicase-DNA-binding protein 4

Organism	Gene ID	UniProt ID
Human	1108	Q14839
Mouse	107932	Q6PDQ2

Cellular Localization	Nucleus. Cytoplasm, cytoskeleton, microtubule organizing center, centrosome. Associates with centrosomes in interphase.
Tissue specificity	Epithelium, Pancreas, Skin, Uterus

Validation Data



Various whole cell lysates were separated by 4-8% SDS-PAGE, and the membrane was blotted with anti-CHD4 antibody. The HRP conjugated Goat anti-Rabbit IgG (H + L) antibody was used to detect the antibody.

Lane 1: NCCIT

Predicted band size: 218kDa

Observed band size: 260kDa

For Research Use Only