

MYH7 Rabbit mAb (AR1718)

Key Features

Host Species:	Rabbit
Reactivity:	Human, Mouse, Rat
Applications:	WB, IHC, IF, ELISA
Isotype:	IgG, Kappa
MW:	223kDa (Calculated) 223kDa (Observed)

Recommended Dilution Ratios

IHC:	1:200-1000
WB:	1:2000-10000
IF:	1:200-1000
ELISA:	1:5000-20000

Storage

-15°C to -25°C/1 year (Do not lower than -25°C)

Basic Information

Clonality	Monoclonal
-----------	------------

Immunogen Information

Specificity	Endogenous
-------------	------------

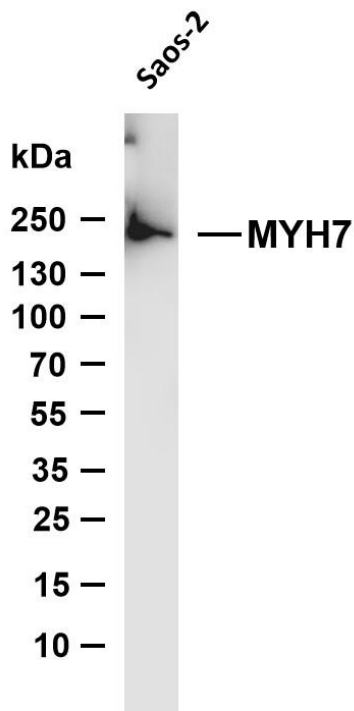
Target Information

Gene name	MYH7 MYHCB
Protein Name	Myosin-7 (Myosin heavy chain 7) (Myosin heavy chain slow isoform) (MyHC-slow) (Myosin heavy chain, cardiac muscle beta isoform) (MyHC-beta)

	Organism	Gene ID	UniProt ID
	Human	4625	P12883
	Mouse	140781	Q91Z83
	Rat	29557	P02564
Cellular Localization	Cytoplasm, myofibril. Cytoplasm, myofibril, sarcomere. Thick filaments of the myofibrils.		
Tissue specificity	Both wild type and variant Gln-403 are detected in skeletal muscle		

(at protein level).

Validation Data

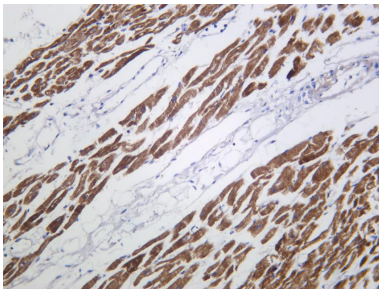


Various whole cell lysates were separated by 4-8% SDS-PAGE, and the membrane was blotted with anti-MYH7 antibody. The HRP conjugated Goat anti-Rabbit IgG (H + L) antibody was used to detect the antibody.

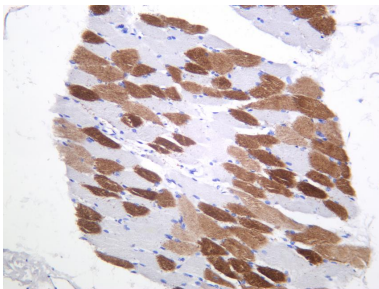
Lane 1: Saos-2

Predicted band size: 223kDa

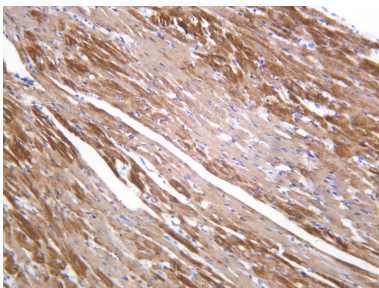
Observed band size: 223kDa



Human cardiac muscle was stained with anti-MYH7 Rabbit antibody.



Human skeletal muscle was stained with anti-MYH7 Rabbit antibody.



Mouse cardiac muscle was stained with anti-MYH7 Rabbit antibody.