

ATF-3 Rabbit mAb (AR1717)

Key Features

Host Species:	Rabbit
Reactivity:	Human, Mouse
Applications:	WB, IHC, IF, IP, ELISA
Isotype:	IgG, Kappa
MW:	21kDa (Calculated) 21kDa (Observed)

Recommended Dilution Ratios

IHC:	1:200-1000
WB:	1:2000-10000
IF:	1:200-1000
ELISA:	1:5000-20000
IP:	1:50-200

Storage

-15°C to -25°C/1 year (Do not lower than -25°C)

Basic Information

Clonality	Monoclonal
-----------	------------

Immunogen Information

Specificity	Endogenous
-------------	------------

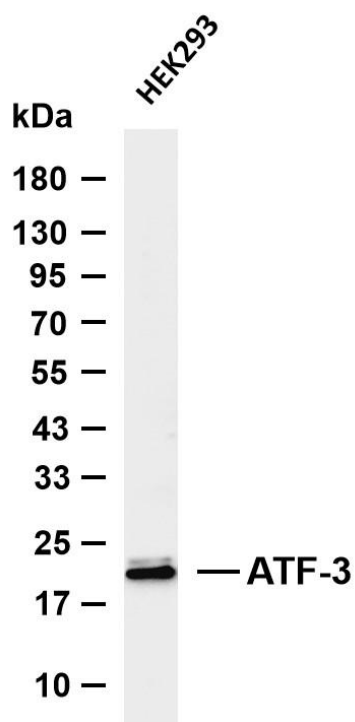
Target Information

Gene name	ATF3
Protein Name	Cyclic AMP-dependent transcription factor ATF-3

Organism	Gene ID	UniProt ID
Human	467	P18847
Mouse	11910	Q60765

Cellular Localization	Nucleus
Tissue specificity	Amygdala, Brain, Cerebellum, Muscle

Validation Data



Various whole cell lysates were separated by 4-20% SDS-PAGE, and the membrane was blotted with anti-ATF-3 antibody. The HRP conjugated Goat anti-Rabbit IgG (H + L) antibody was used to detect the antibody.

Lane 1: HEK293

Predicted band size: 21kDa

Observed band size: 21kDa

For Research Use Only