

TREM2 Rabbit mAb (AR1715)

Key Features

Host Species:	Rabbit
Reactivity:	Human
Applications:	WB,IF,IP,ELISA
Isotype:	IgG,Kappa
MW:	26kDa (Calculated) 26kDa (Observed)

Recommended Dilution Ratios

WB:	1:2000-10000
IF:	1:200-1000
ELISA:	1:5000-20000
IP:	1:50-200

Storage

-15°C to -25°C/1 year (Do not lower than -25°C)

Basic Information

Clonality	Monoclonal
-----------	------------

Immunogen Information

Specificity	Endogenous
-------------	------------

Target Information

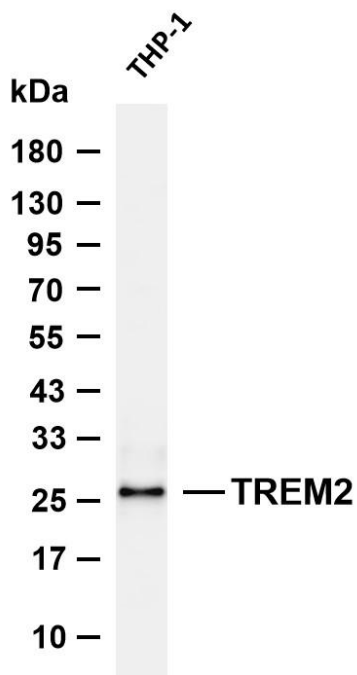
Gene name	TREM2
Protein Name	Triggering receptor expressed on myeloid cells 2 (TREM-2) (Triggering receptor expressed on monocytes 2)

Organism	Gene ID	UniProt ID
Human	54209	Q9NZC2

Cellular Localization	[Isoform 1]: Cell membrane; Single-pass type I membrane protein; [Isoform 2]: Secreted; [Isoform 3]: Secreted. Expressed in the brain, specifically in microglia and in the fusiform gyrus (at protein level) (PubMed:28802038, PubMed:28855300, PubMed:27477018, PubMed:29752066). Expressed on macrophages and dendritic cells but not on granulocytes or monocytes (PubMed:10799849, PubMed:28855301). In the CNS
Tissue specificity	

strongest expression seen in the basal ganglia, corpus callosum, medulla oblongata and spinal cord (PubMed:12080485).

Validation Data



Various whole cell lysates were separated by 4-20% SDS-PAGE, and the membrane was blotted with anti TREM2 antibody. The HRP-conjugated Goat anti-Rabbit IgG (H + L) antibody was used to detect the antibody.

Lane 1: THP-1

Predicted band size: 26kDa

Observed band size: 26kDa

For Research Use Only