

## EMR1 (F4/80) Rabbit mAb (AR1713)

### Key Features

Host Species:	Rabbit
Reactivity:	Human, Mouse, Rat
Applications:	WB, IHC, IF, ELISA
Isotype:	IgG, Kappa
MW:	98kDa (Calculated) 98-160kDa (Observed)

### Recommended Dilution Ratios

IHC:	1:200-1000
WB:	1:10000-50000
IF:	1:200-1000
ELISA:	1:5000-20000

### Storage

-15°C to -25°C/1 year (Do not lower than -25°C)

### Basic Information

Clonality	Monoclonal
-----------	------------

### Immunogen Information

Specificity	Endogenous
-------------	------------

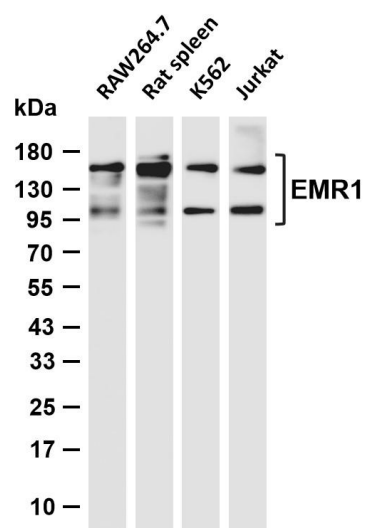
### Target Information

Gene name	EMR1
Protein Name	EGF-like module-containing mucin-like hormone receptor-like 1

Organism	Gene ID	UniProt ID
Human	2015	Q14246
Mouse		Q61549

Cellular Localization	Cell membrane; Multi-pass membrane protein.
Tissue specificity	Expression is restricted to eosinophils.

## Validation Data



Various whole cell lysates were separated by 4-20% SDS-PAGE, and the membrane was blotted with anti-EMR1 antibody. The HRP conjugated Goat anti-Rabbit IgG (H + L) antibody was used to detect the antibody.

Lane 1: RAW264.7

Lane 2: Rat spleen

Lane 3: K562

Lane 4: Jurkat

Predicted band size: 98kDa

Observed band size: 98-160kDa

For Research Use Only