

Claudin 4 Rabbit mAb (AR1712)

Key Features

Host Species:	Rabbit
Reactivity:	Human, Mouse, Rat
Applications:	WB, IHC, IF, IP, ELISA
Isotype:	IgG, Kappa
MW:	22kDa (Calculated) 18kDa (Observed)

Recommended Dilution Ratios

IHC:	1:100-500
WB:	1:2000-10000
IF:	1:200-1000
ELISA:	1:5000-20000
IP:	1:50-200

Storage

-15°C to -25°C/1 year (Do not lower than -25°C)

Basic Information

Clonality	Monoclonal
-----------	------------

Immunogen Information

Specificity	Endogenous
-------------	------------

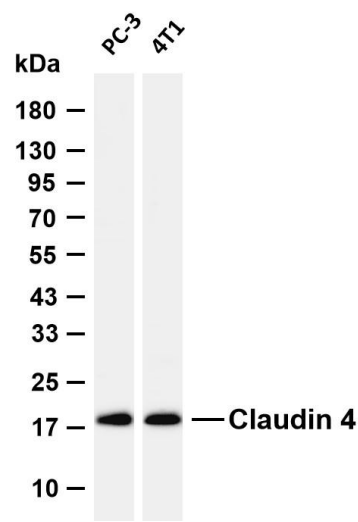
Target Information

Gene name	CLDN4
Protein Name	Claudin-4

Organism	Gene ID	UniProt ID
Human	1364	O14493
Mouse	12740	O35054

Cellular Localization	Cell junction, tight junction. Cell membrane; Multi-pass membrane protein. CLDN4 is required for tight junction localization in the kidney.
Tissue specificity	Colon, Fetal brain, Trachea

Validation Data



Various whole cell lysates were separated by 4-20% SDS-PAGE, and the membrane was blotted with anti-Claudin 4 antibody. The HRP conjugated Goat anti-Rabbit IgG (H + L) antibody was used to detect the antibody.

Lane 1: PC-3

Lane 2: 4T1

Predicted band size: 22kDa

Observed band size: 18kDa

For Research Use Only