

Lysozyme Rabbit mAb (AR1710)

Key Features

Host Species:	Rabbit
Reactivity:	Human, Mouse
Applications:	WB, IHC, IF, ELISA
Isotype:	IgG, Kappa
MW:	17kDa (Calculated) 17kDa (Observed)

Recommended Dilution Ratios

IHC:	1:200-1000
WB:	1:2000-10000
IF:	1:200-1000
ELISA:	1:5000-20000

Storage

-15°C to -25°C/1 year (Do not lower than -25°C)

Basic Information

Clonality	Monoclonal
-----------	------------

Immunogen Information

Specificity	Endogenous
-------------	------------

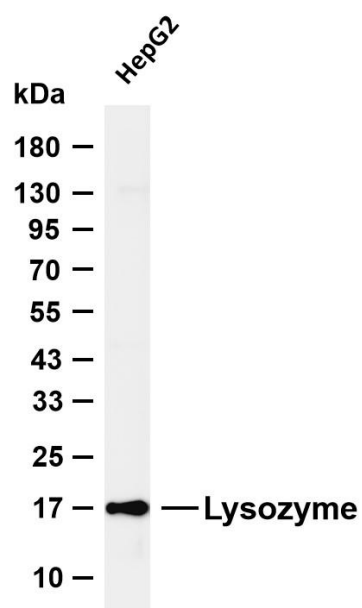
Target Information

Gene name	LYZ LZM
Protein Name	Lysozyme

Organism	Gene ID	UniProt ID
Human	4069	P61626

Cellular Localization	Cytoplasmic
Tissue specificity	spleen, lung, kidney, white blood cells, plasma.

Validation Data

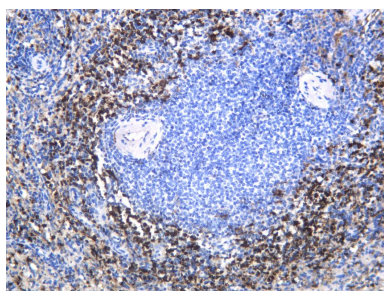


Various whole cell lysates were separated by 4-20% SDS-PAGE, and the membrane was blotted with anti-Lysozyme antibody. The HRP conjugated Goat anti-Rabbit IgG (H + L) antibody was used to detect the antibody.

Lane 1: HepG2

Predicted band size: 17kDa

Observed band size: 17kDa



Human spleen was stained with anti-Lysozyme Rabbit antibody

For Research Use Only