

ERCC1 Rabbit mAb (AR1706)

Key Features

Host Species:	Rabbit
Reactivity:	Human, Mouse, Rat
Applications:	WB, IHC, IF, ELISA
Isotype:	IgG, Kappa
MW:	33kDa (Calculated) 39kDa (Observed)

Recommended Dilution Ratios

IHC:	1:200-1000
WB:	1:2000-10000
IF:	1:200-1000
ELISA:	1:5000-20000

Storage

-15°C to -25°C/1 year (Do not lower than -25°C)

Basic Information

Clonality	Monoclonal
-----------	------------

Immunogen Information

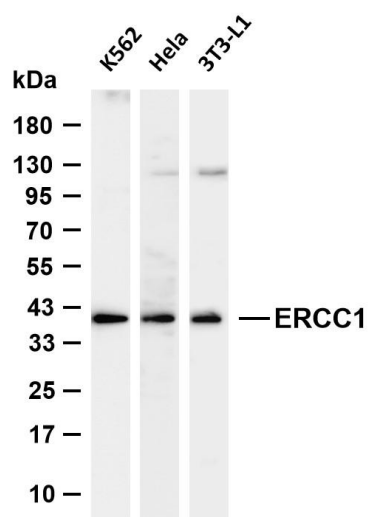
Specificity	Endogenous
-------------	------------

Target Information

Gene name	ERCC1
Protein Name	DNA excision repair protein ERCC-1

	Organism	Gene ID	UniProt ID
	Human	2067	P07992
	Mouse	13870	P07903
Cellular Localization	[Isoform 1]: Nucleus; [Isoform 2]: Cytoplasm. Nucleus; [Isoform 3]: Nucleus; [Isoform 4]: Nucleus.		
Tissue specificity	Cerebellum, Lung, Ovarian cancer, Uterus		

Validation Data



Various whole cell lysates were separated by 4-20% SDS-PAGE, and the membrane was blotted with anti-ERCC1 antibody. The HRP conjugated Goat anti-Rabbit IgG (H + L) antibody was used to detect the antibody.

Lane 1: K562

Lane 2: HeLa

Lane 3: 3T3-L1

Predicted band size: 33kDa

Observed band size: 39kDa

For Research Use Only