

F4/80 Rabbit mAb (AR1703)

Key Features

| | |
|---------------|---|
| Host Species: | Rabbit |
| Reactivity: | Mouse |
| Applications: | WB,IHC,IF,ELISA |
| Isotype: | IgG,Kappa |
| MW: | 102kDa (Calculated) 70-250kDa (Observed) |

Recommended Dilution Ratios

| | |
|--------|--------------|
| IHC: | 1:2000-8000 |
| WB: | 1:2000-10000 |
| IF: | 1:200-1000 |
| ELISA: | 1:5000-20000 |

Storage

-15°C to -25°C/1 year (Do not lower than -25°C)

Basic Information

| | |
|-----------|------------|
| Clonality | Monoclonal |
|-----------|------------|

Immunogen Information

| | |
|-------------|------------|
| Specificity | Endogenous |
|-------------|------------|

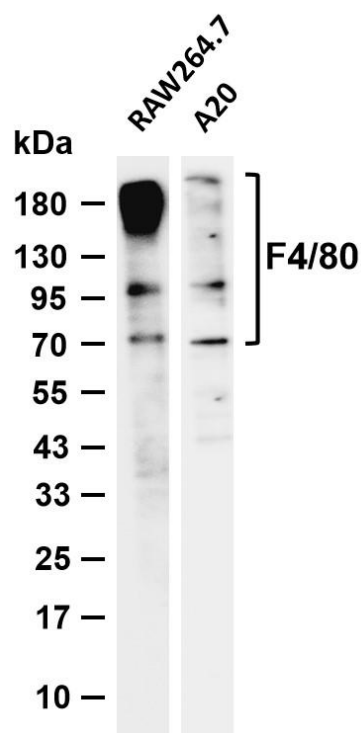
Target Information

| | |
|--------------|---|
| Gene name | EMR1 |
| Protein Name | EGF-like module-containing mucin-like hormone receptor-like 1 |

| Organism | Gene ID | UniProt ID |
|----------|---------|------------|
| Mouse | | Q61549 |

| | |
|-----------------------|---|
| Cellular Localization | Cell membrane; Multi-pass membrane protein. |
| Tissue specificity | Expression is restricted to eosinophils. |

Validation Data



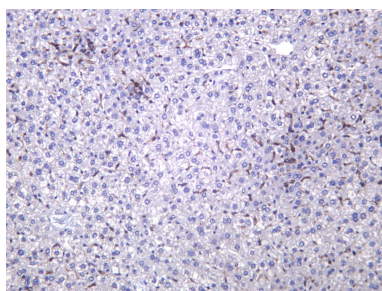
Various whole cell lysates were separated by 4-20% SDS-PAGE, and the membrane was blotted with anti-F4/80 antibody. The HRP conjugated Goat anti-Rabbit IgG (H + L) antibody was used to detect the antibody.

Lane 1: RAW264.7

Lane 2: A20

Predicted band size: 102kDa

Observed band size: 70-250kDa



Mouse liver was stained with anti-F4/80 Rabbit antibody.

For Research Use Only