

Cytokeratin 13 Rabbit mAb (AR1705)

Key Features

Host Species:	Rabbit
Reactivity:	Human,Mouse,Rat
Applications:	WB,IHC,IF,ELISA
Isotype:	IgG,Kappa
MW:	50kDa (Calculated) 50kDa (Observed)

Recommended Dilution Ratios

IHC:	1:200-1000
WB:	1:2000-10000
IF:	1:200-1000
ELISA:	1:5000-20000

Storage

-15°C to -25°C/1 year (Do not lower than -25°C)

Basic Information

Clonality	Monoclonal
-----------	------------

Immunogen Information

Specificity	Endogenous
-------------	------------

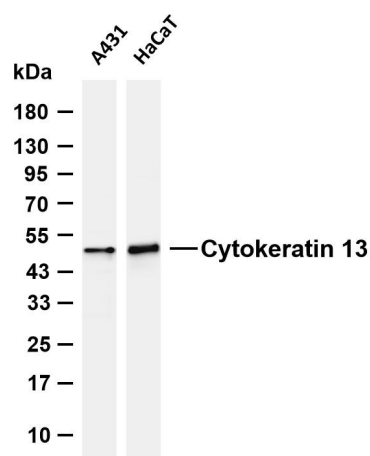
Target Information

Gene name	KRT13
Protein Name	Keratin type I cytoskeletal 13

Organism	Gene ID	UniProt ID
Human	3860	P13646
Mouse	16663	P08730
Rat	287699	Q6IFV4

Cellular Localization	nucleus, intermediate filament, keratin filament, intermediate filament cytoskeleton, extracellular exosome
Tissue specificity	Expressed in some epidermal sweat gland ducts (at protein level) and in exocervix, esophagus and placenta.

Validation Data



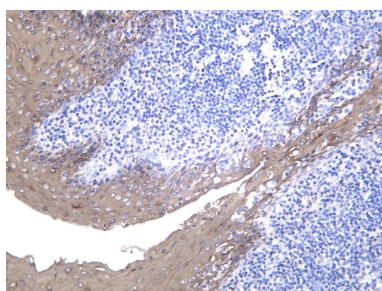
Various whole cell lysates were separated by 4-20% SDS-PAGE, and the membrane was blotted with anti-Cytokeratin 13 antibody. The HRP-conjugated Goat anti-Rabbit IgG (H + L) antibody was used to detect the antibody.

Lane 1: A431

Lane 2: HaCaT

Predicted band size: 50kDa

Observed band size: 50kDa



Human tonsil was stained with anti-Cytokeratin 13 Rabbit antibody.

For Research Use Only