

14-3-3 ε Rabbit mAb (AR1704)

Key Features

Host Species:	Rabbit
Reactivity:	Human, Mouse, Rat
Applications:	WB, IF, ELISA
Isotype:	IgG, Kappa
MW:	29kDa (Calculated) 29kDa (Observed)

Recommended Dilution Ratios

WB:	1:2000-10000
IF:	1:200-1000
ELISA:	1:5000-20000

Storage

-15°C to -25°C/1 year (Do not lower than -25°C)

Basic Information

Clonality	Monoclonal
-----------	------------

Immunogen Information

Specificity	Endogenous
-------------	------------

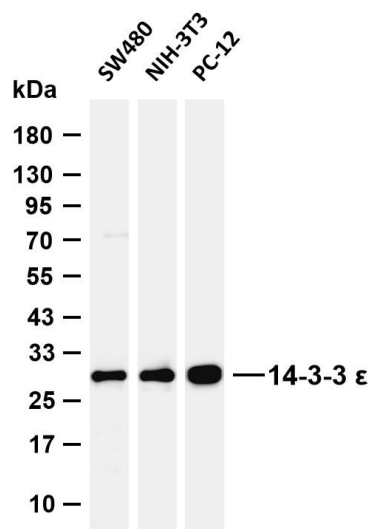
Target Information

Gene name	YWHAE
Protein Name	14-3-3 protein epsilon

Organism	Gene ID	UniProt ID
Human	7531	P62258
Mouse	22627	P62259
Rat	29753	P62260

Cellular Localization	Nucleus. Cytoplasm. Melanosome. Identified by mass spectrometry in melanosome fractions from stage I to stage IV.
Tissue specificity	B-cell lymphoma, Brain, Cajal

Validation Data



Various whole cell lysates were separated by 4-20% SDS-PAGE, and the membrane was blotted with anti-14-3-3 ε antibody. The HRP conjugated Goat anti-Rabbit IgG (H + L) antibody was used to detect the antibody.

Lane 1: SW480

Lane 2: NIH-3T3

Lane 3: PC-12

Predicted band size: 29kDa

Observed band size: 29kDa

For Research Use Only