

FGF-23 Rabbit mAb (AR1702)

Key Features

Host Species:	Rabbit
Reactivity:	Human, Mouse, Rat
Applications:	WB, IF, ELISA
Isotype:	IgG, Kappa
MW:	28kDa (Calculated) 36kDa (Observed)

Recommended Dilution Ratios

WB:	1:2000-10000
IF:	1:200-1000
ELISA:	1:5000-20000

Storage

-15°C to -25°C/1 year (Do not lower than -25°C)

Basic Information

Clonality	Monoclonal
-----------	------------

Immunogen Information

Specificity	Endogenous
-------------	------------

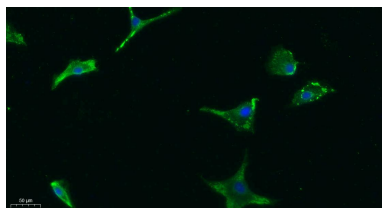
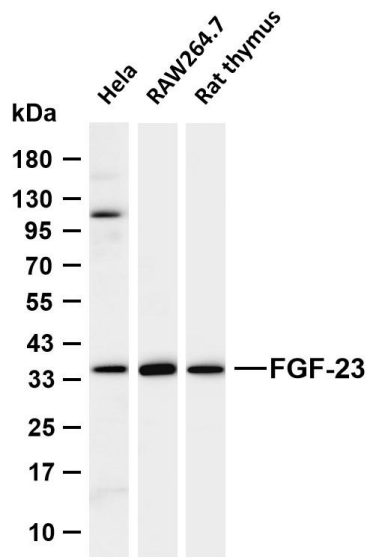
Target Information

Gene name	FGF23
Protein Name	Fibroblast growth factor 23

Organism	Gene ID	UniProt ID
Human	8074	Q9GZV9
Mouse	64654	Q9EPC2
Rat	170583	Q8VI82

Cellular Localization	Secreted. Secretion is dependent on O-glycosylation.
Tissue specificity	Expressed in osteogenic cells particularly during phases of active bone remodeling. In adult trabecular bone, expressed in osteocytes and flattened bone-lining cells (inactive osteoblasts).

Validation Data



Various whole cell lysates were separated by 4-20% SDS-PAGE, and the membrane was blotted with anti-FGF-23 antibody. The HRP conjugated Goat anti-Rabbit IgG (H + L) antibody was used to detect the antibody.

Lane 1: HeLa

Lane 2: RAW264.7

Lane 3: Rat thymus

Predicted band size: 28kDa

Observed band size: 36kDa

Immunofluorescence analysis of A549.

1. Primary Antibody was diluted at 1:200(4°C overnight).
2. Goat Anti Rabbit IgG (H&L) - Alexa Fluor 488 Secondary antibody was diluted at 1:1000(room temperature, 50min).
3. DAPI (blue) 10min.

For Research Use Only