

CD20 Rabbit mAb (AR1700)

Key Features

Host Species:	Rabbit
Reactivity:	Human, Mouse, Rat
Applications:	WB, IHC, IF, ELISA
Isotype:	IgG, Kappa
MW:	33kDa (Calculated) 33kDa (Observed)

Recommended Dilution Ratios

IHC:	1:200-1000
WB:	1:2000-10000
IF:	1:200-1000
ELISA:	1:5000-20000

Storage

-15°C to -25°C/1 year (Do not lower than -25°C)

Basic Information

Clonality	Monoclonal
-----------	------------

Immunogen Information

Specificity	Endogenous
-------------	------------

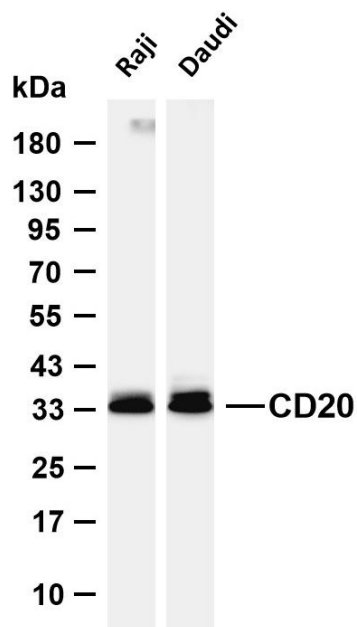
Target Information

Gene name	MS4A1 CD20
Protein Name	CD20

Organism	Gene ID	UniProt ID
Human	931	P11836
Mouse	12482	P19437
Rat	309217	D4A4Y3

Cellular Localization	Membrane
Tissue specificity	Expressed on B-cells

Validation Data



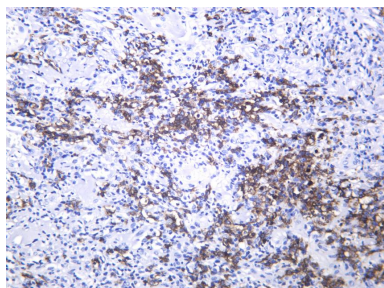
Various whole cell lysates were separated by 4-20% SDS-PAGE, and the membrane was blotted with anti-CD20 antibody. The HRP conjugated Goat anti-Rabbit IgG (H + L) antibody was used to detect the antibody.

Lane 1: Raji

Lane 2: Daudi

Predicted band size: 33kDa

Observed band size: 33kDa



Human B cell lymphoma was stained with anti-CD20 Rabbit antibody.

For Research Use Only