

TORC1 Rabbit mAb (AR1709)

Key Features

Host Species:	Rabbit
Reactivity:	Human,Mouse,Rat
Applications:	WB,IF,ELISA
Isotype:	IgG,Kappa
MW:	67kDa (Calculated) 78kDa (Observed)

Recommended Dilution Ratios

WB:	1:2000-10000
IF:	1:200-1000
ELISA:	1:5000-20000

Storage

-15°C to -25°C/1 year (Do not lower than -25°C)

Basic Information

Clonality	Monoclonal
-----------	------------

Immunogen Information

Specificity	Endogenous
-------------	------------

Target Information

Gene name	CRTC1 KIAA0616 MECT1 TORC1 WAMTP1
-----------	-----------------------------------

Protein Name	CREB-regulated transcription coactivator 1
--------------	--

Organism	Gene ID	UniProt ID
Human	23373	Q6UUV9
Mouse	382056	Q68ED7
Rat	684527	Q157S1

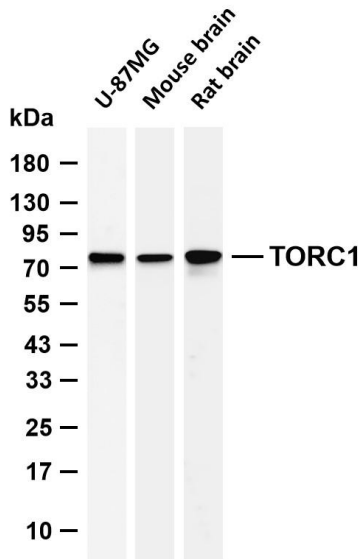
Cellular Localization	Cytoplasm. Nucleus. Cytoplasmic when phosphorylated by SIK or AMPK and when sequestered by 14-3-3 proteins (PubMed:16817901). Translocated to the nucleus on Ser-151 dephosphorylation, instigated by a number of factors including calcium ion and cAMP levels (PubMed:15589160). Light stimulation triggers a nuclear accumulation in the suprachiasmatic nucleus
-----------------------	---

(SCN) of the brain (By similarity).

Highly expressed in adult and fetal brain. Located to specific regions such as the prefrontal cortex and cerebellum. Very low expression in other tissues such as heart, spleen, lung, skeletal muscle, salivary gland, ovary and kidney.

Tissue specificity

Validation Data



Various whole cell lysates were separated by 4-20% SDS-PAGE, and the membrane was blotted with anti-TORC1 antibody. The HRP conjugated Goat anti-Rabbit IgG (H + L) antibody was used to detect the antibody.

Lane 1: U-87MG

Lane 2: Mouse brain

Lane 3: Rat brain

Predicted band size: 67kDa

Observed band size: 78kDa

For Research Use Only