

## RALA Rabbit pAb (AR20071)

### Key Features

Host Species:	Rabbit
Reactivity:	Human,Mouse,Rat
Applications:	WB,ELISA
Isotype:	IgG
MW:	22kD (Observed)

### Recommended Dilution Ratios

WB:	1:500-2000
ELISA:	1: 5000-20000
Storage	-15°C to -25°C/1 year (Do not lower than -25°C)

### Basic Information

Clonality	Polyclonal
-----------	------------

### Immunogen Information

Specificity	RALA Polyclonal Antibody detects endogenous levels of protein.
-------------	--

### Target Information

Gene name	RALA RAL
Protein Name	Ras-related protein Ral-A

Organism	Gene ID	UniProt ID
Human	5898	P11233
Mouse		P63321
Rat		P63322

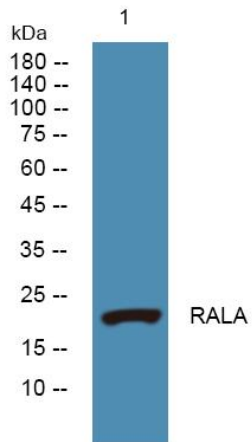
Cellular Localization	Cell membrane ; Lipid-anchor ; Cytoplasmic side. Cleavage furrow . Midbody, Midbody ring . Mitochondrion . Predominantly at the cell surface in the absence of LPA. In the presence of LPA, colocalizes with LPAR1 and LPAR2 in endocytic vesicles (PubMed:19306925). May colocalize with CNTRL/centriolin at the midbody ring (PubMed:16213214). However, localization at the midbody at late cytokinesis was not confirmed (PubMed:18756269). Relocalizes to the mitochondrion during mitosis where it regulates mitochondrial
-----------------------	--

fission (PubMed:21822277).

Tissue specificity

Eye,Lung,Platelet

## Validation Data



Western blot analysis of lysates from K562 cells, primary antibody was diluted at 1:1000, 4°over night

For Research Use Only